



TERRATINTA
group

Certified



Corporation[®]

TERRATINTA GROUP
DOMESTIC STOCK DEDICATED TO US MARKET

TERRATINTA
group



Terratinta Group was born from the idea of creating something different that would leave a mark in the ceramics sector. We created a new world of ideas starting from the origins, from concepts based on simplicity, professionalism and great passion, the founding values of the Italian ceramic district. Our 4 brands cover 57 Countries, bringing the distinctive features of each brand and made in Italy design to the world.

terratinta^{100%}
ceramiche made in Italy



SARTORIA^{est. 2018} Micro.



COLLECTIONS

p 7. MATERICI Sartoria

p 16. TINT Sartoria

p 26. NORSE Terratinta Ceramiche

p 38. MICROCOSMI Ceramica Magica

MATERICI

In Materici collection, ceramic tradition and design meet, reworking the "handmade" theme in a contemporary key thanks to modern production systems. Highly polished porcelain stoneware bricks in the 2"x10" cover surfaces with surprising color effects and plays of light. Characterised by the typical imperfections of handcrafted majolica production, they lend themselves with flexibility to numerous laying games on floors and walls. The palette consists of neutral shades such as Latte, Argilla, Cannella, Visone and Pepe alongside brighter shades such as Foresta, Stagno and Cedro. The surface, characterised by a multiplicity of different nuances, the brilliance of the glaze and the imperfect edges is ideal for use in combination with materials of natural inspiration, to create distinctive moods that give a new interpretation of traditional ceramics, enhancing their design eclecticism.



SARTORIA^{est.}
2018



MATERICI LATTE



MATERICI ARGILLA



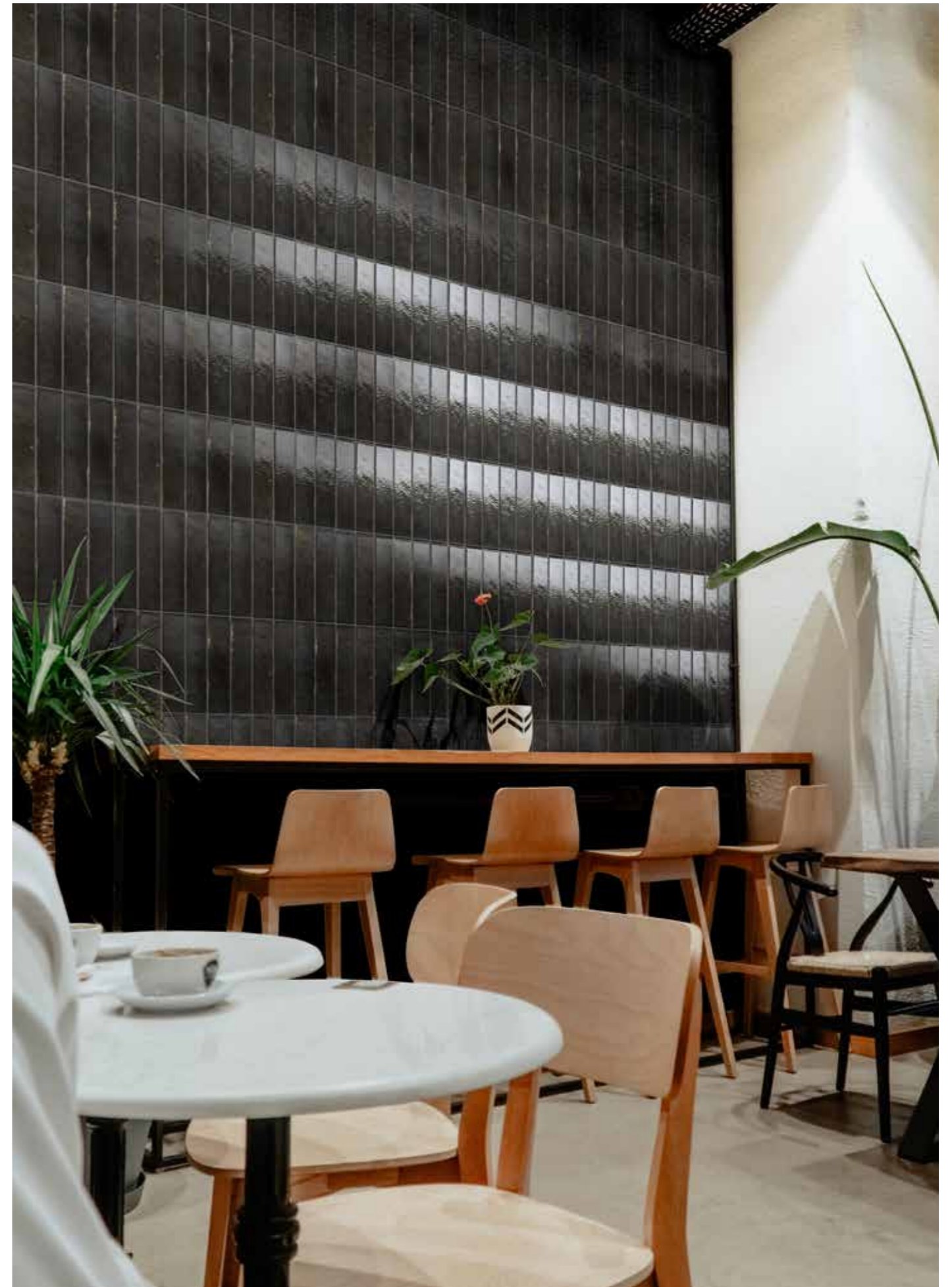
MATERICI CANNELLA



MATERICI CEDRO



MATERICI STAGNO



MATERICI PEPE



MATERICI VISONE



MATERICI FORESTA

TECHNICAL FEATURES

collection	Materici
material	glazed porcelain stoneware
finish	glossy
nominal sizes	2"x10"
thickness	9,5 mm
colors	01 Latte, 02 Argilla, 03 Cannella, 04 Cedro, 05 Stagno, 06 Foresta, 07 Visone, 08 Pepe
category	UNI EN 14411 ISO 13006 App. G



2"x10"

COLORS



Materici 01 Latte

Materici 02 Argilla

Materici 03 Cannella

Materici 04 Cedro



Materici 05 Stagno

Materici 06 Foresta

Materici 07 Visone

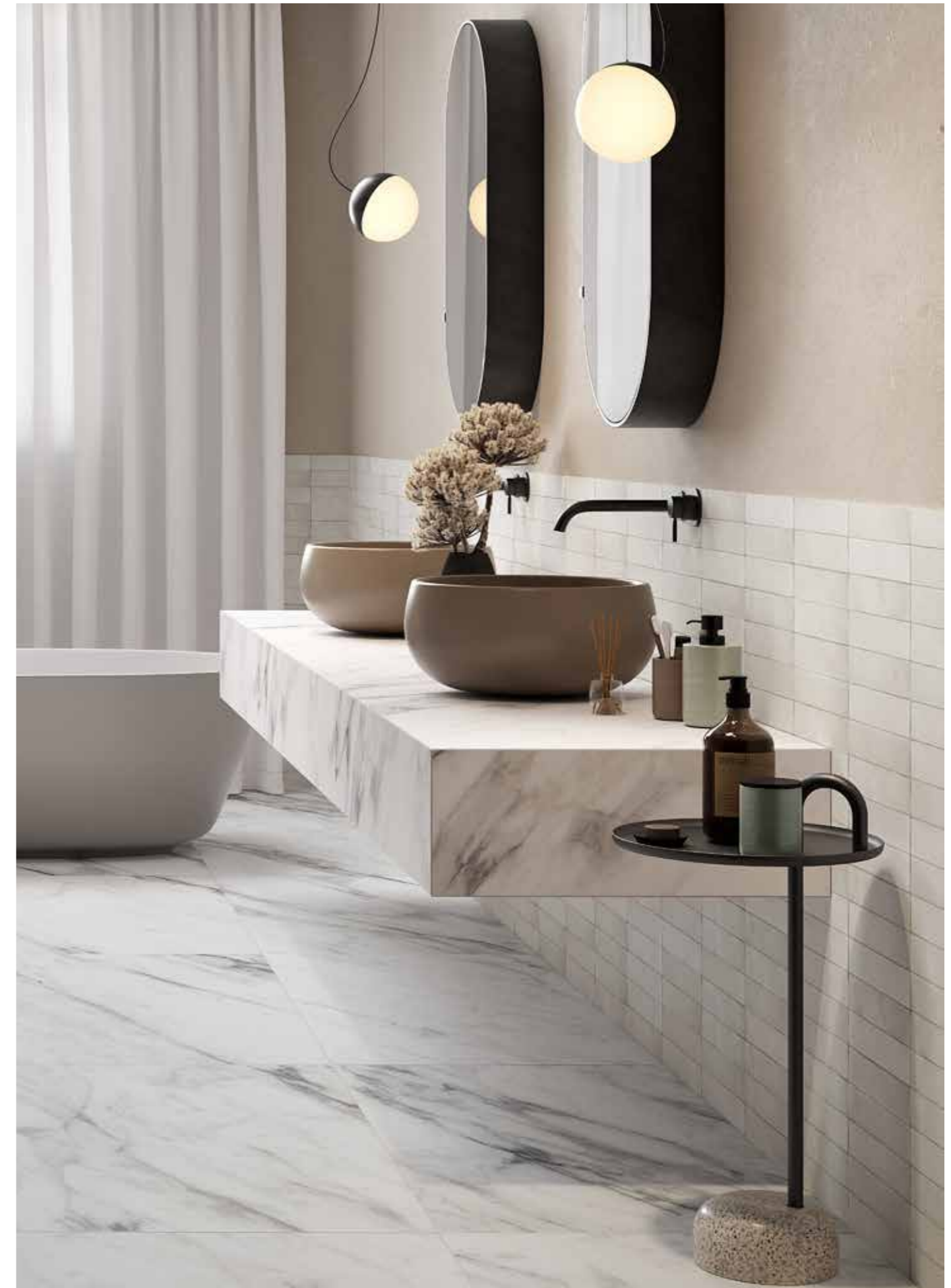
Materici 08 Pepe

TINT

Sartoria explores the decorative potential of wall coverings in a dialogue between material and craftsmanship. The Tint bricks, in the 2"x6 1/2" size, are characterised by graphic and color shading that combine to create depths typical of handmade products, enriched by a material with irregular edges and ever-changing surfaces. The matt finish takes the collection towards a contrast between vintage and minimalism, also thanks to the eight colors, from the more traditional Blanc, Dune and Fog to the natural inspirations of Sea Glass, Garden and Water to the more intense Ocean and Cityscape. With Tint, tradition and innovation combine to create designs that can be modulated to combine the more traditional taste of 'old-fashioned' products and settings with more minimalist and contemporary looks.



SARTORIA * est. 2018



TINT BLANC



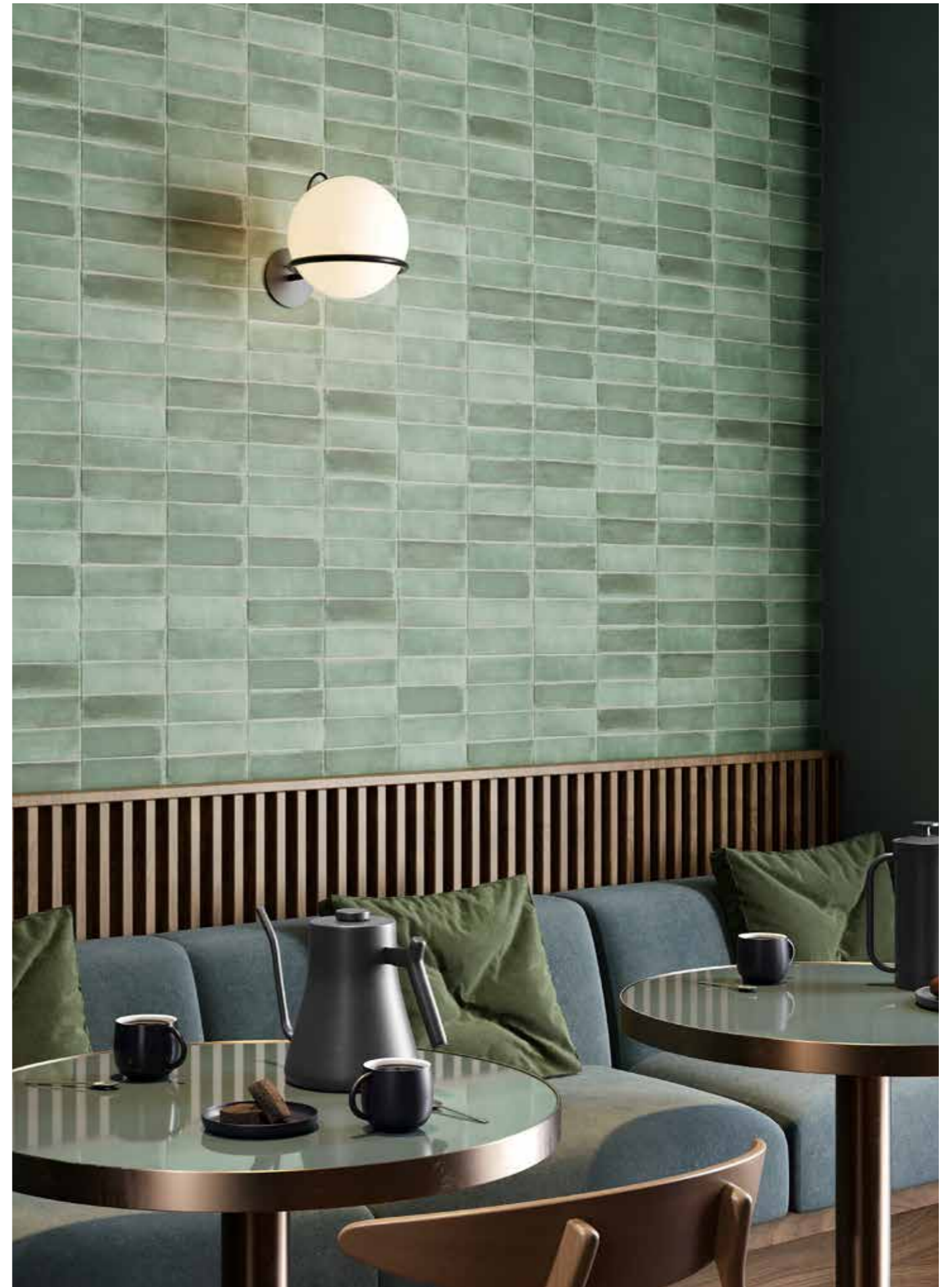
TINT DUNE



TINT FOG



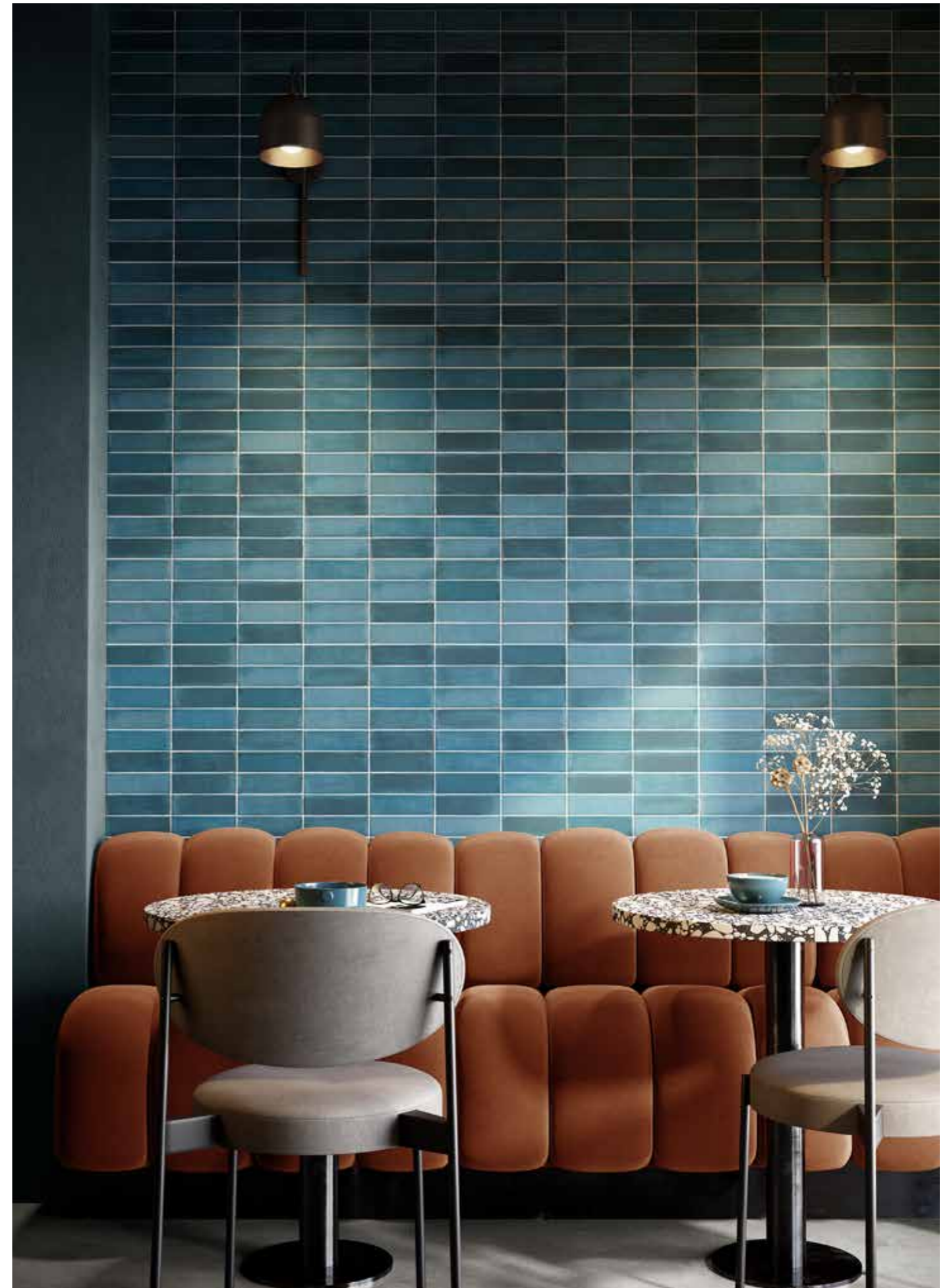
TINT SEA GLASS



TINT GARDEN



TINT WATER



TINT OCEAN



TINT CITYSCAPE

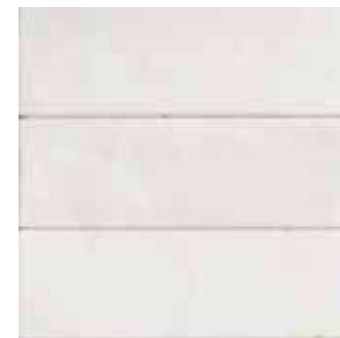
TECHNICAL FEATURES

collection	Tint
material	white-body
finish	matt
nominal sizes	2"x6 ^{1/2} "
thickness	10 mm
colors	Blanc, Dune, Fog, Sea Glass, Garden, Water, Ocean, Cityscape
category	UNI EN 14411 ISO 13006 App. L

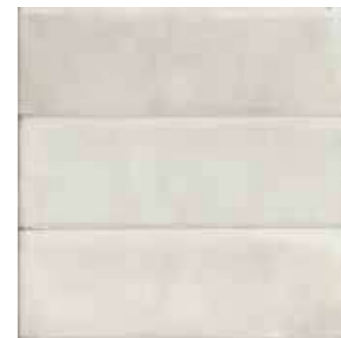


2"x6^{1/2}"

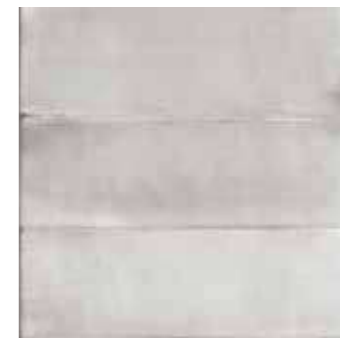
COLORS



Blanc



Dune



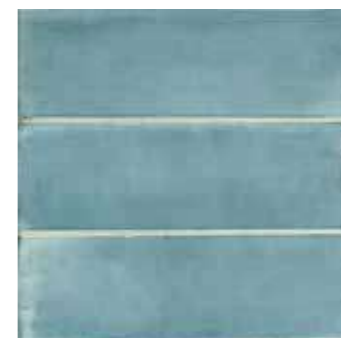
Fog



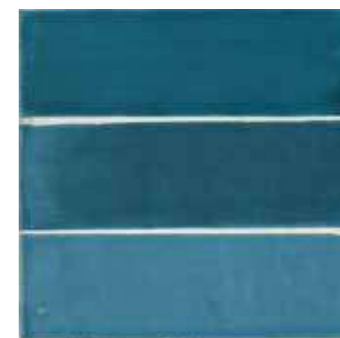
Sea Glass



Garden



Water



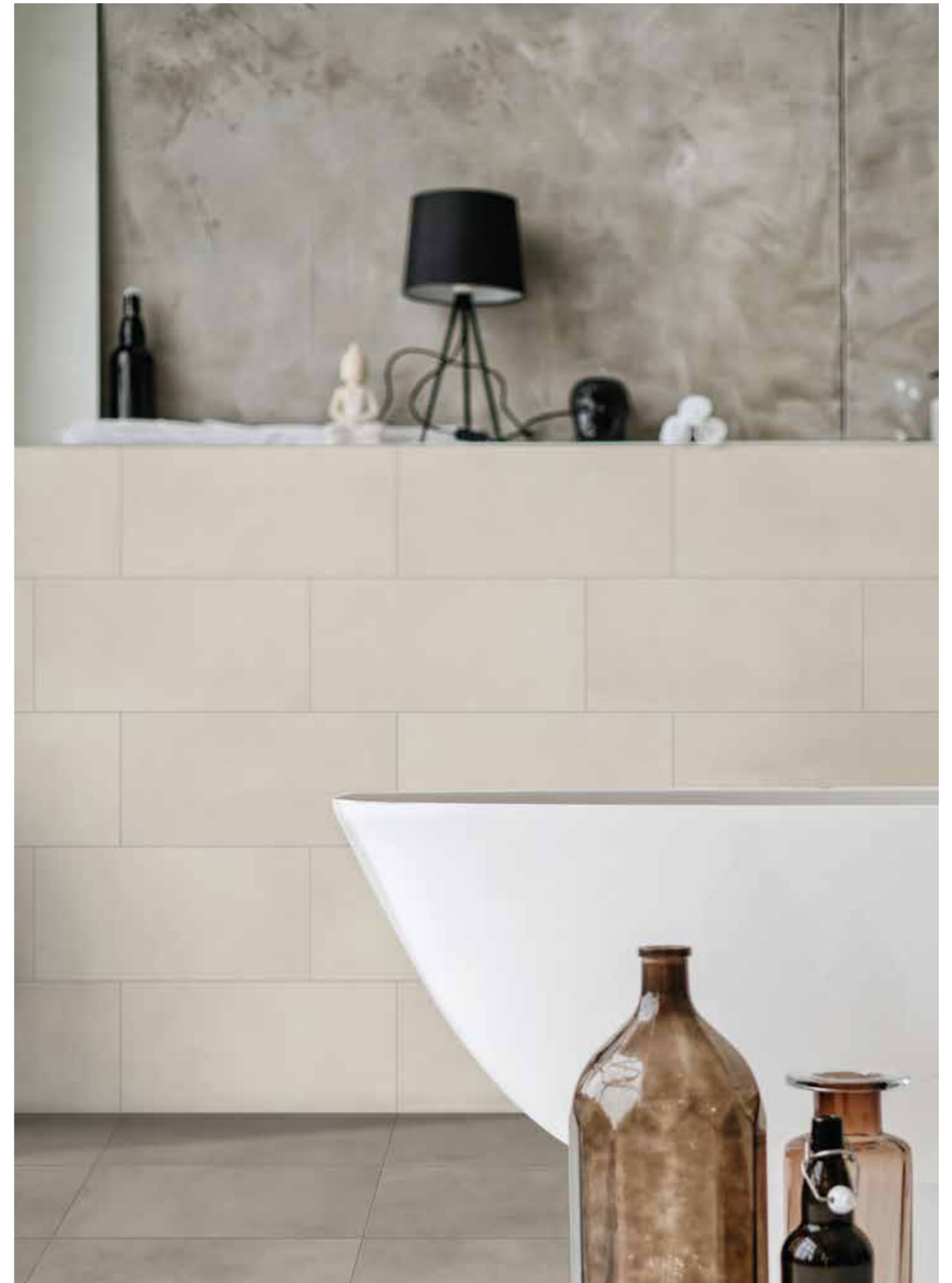
Ocean



Cityscape

NORSE

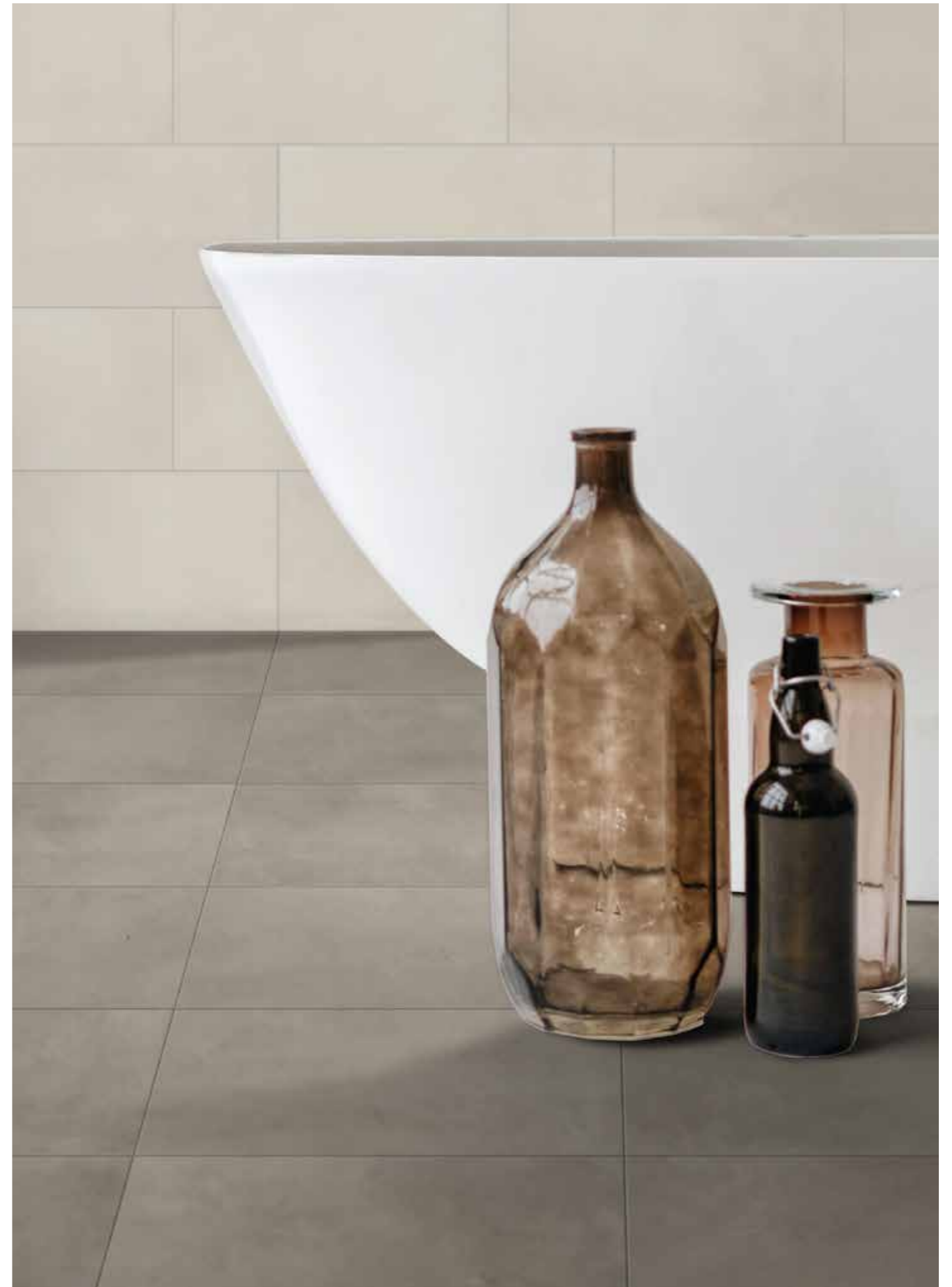
With Norse we tell the story of a material which, thanks to its qualities of neutrality and versatility of use, becomes the protagonist of ceramic projects capable of experimenting with new design and aesthetic standards. Norse is developed in a palette of neutral shades, both warm and cold, characterized by a surface that presents the effect of manual drafting with a slight graphic movement and is completed with new decorative patterns perfectly matched to create refined and unusual total looks and guarantee a high level of customization in line with current trends for increasingly original and individual settings, casual and comfortable but at the same time with elegant sobriety and which promote the idea of "intimacy" as a lifestyle, a perfect marriage of neat minimalism that is also warm and inviting."



NORSE FOG



NORSE POWDER



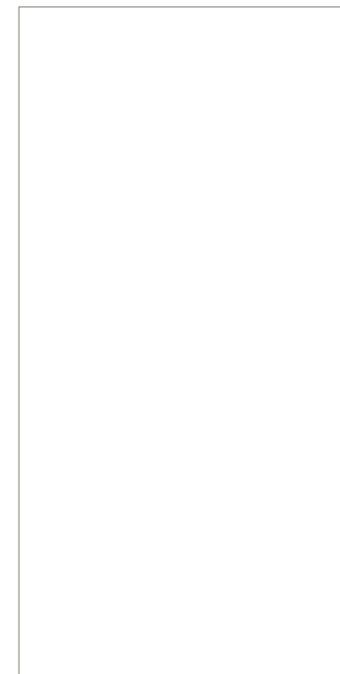
NORSE ASH



NORSE EARTH

TECHNICAL FEATURES

collection	Norse
material	porcelain stoneware
finish	matt
nominal sizes	24"x48" (only in Fog and Powder) - 12"x24"
thickness	10 mm
colors	Fog, Powder, Ash, Earth
category	UNI EN 14411 ISO 13006 App. G



24"x48"
(only in Fog and Powder)

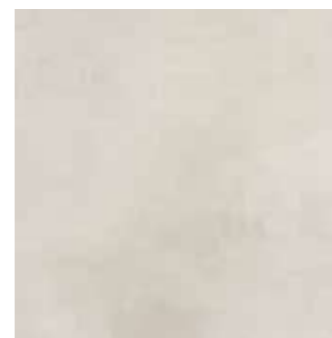


12"x24"

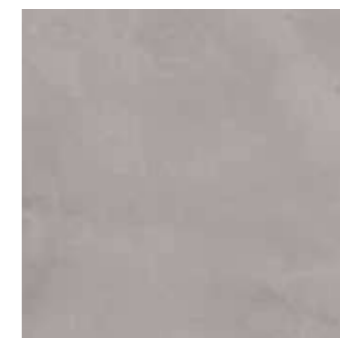
COLORS



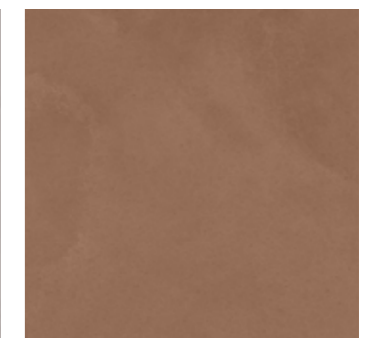
Fog



Powder

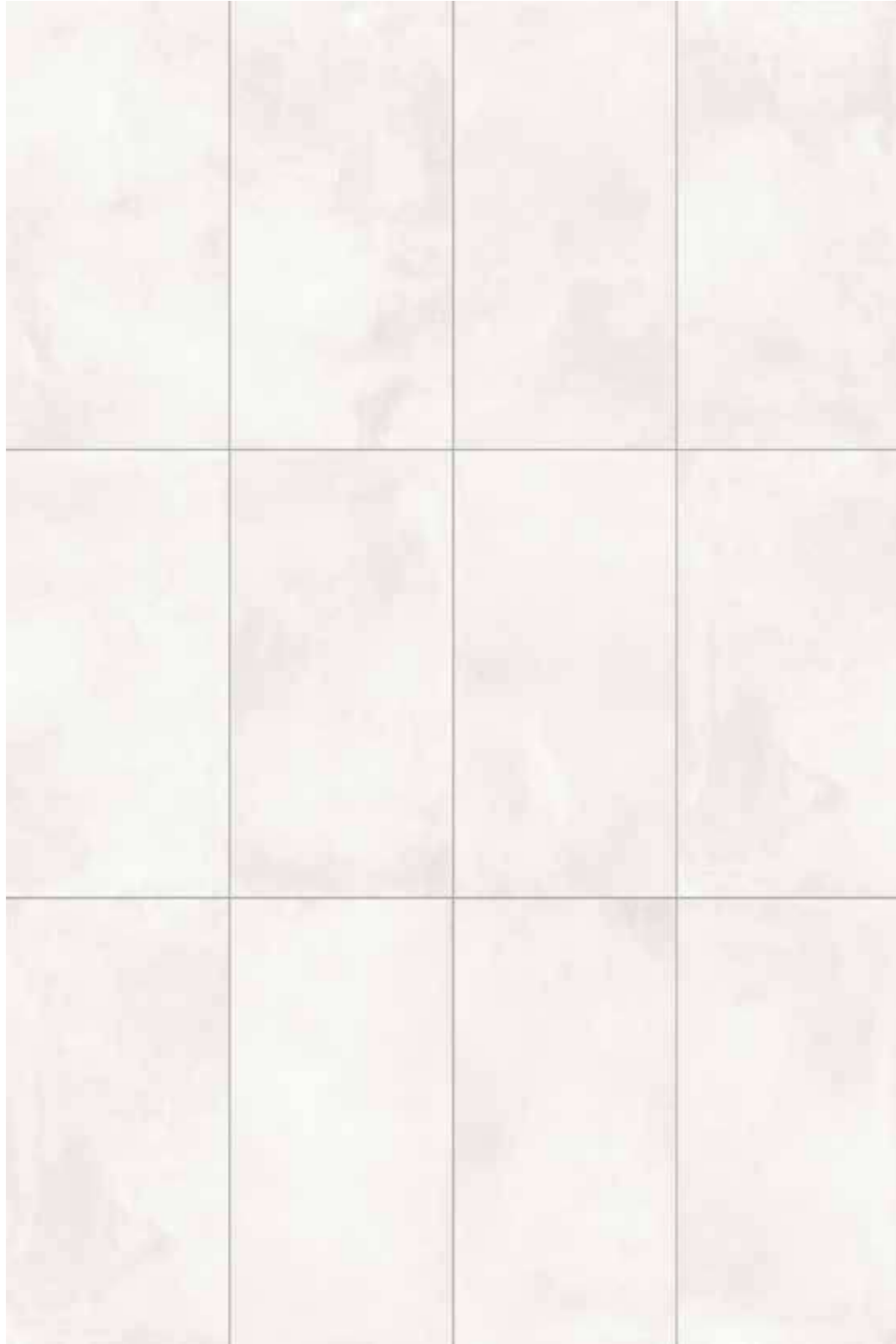


Ash



Earth

NORSE | 24"x48" GRAPHIC DEVELOPMENT

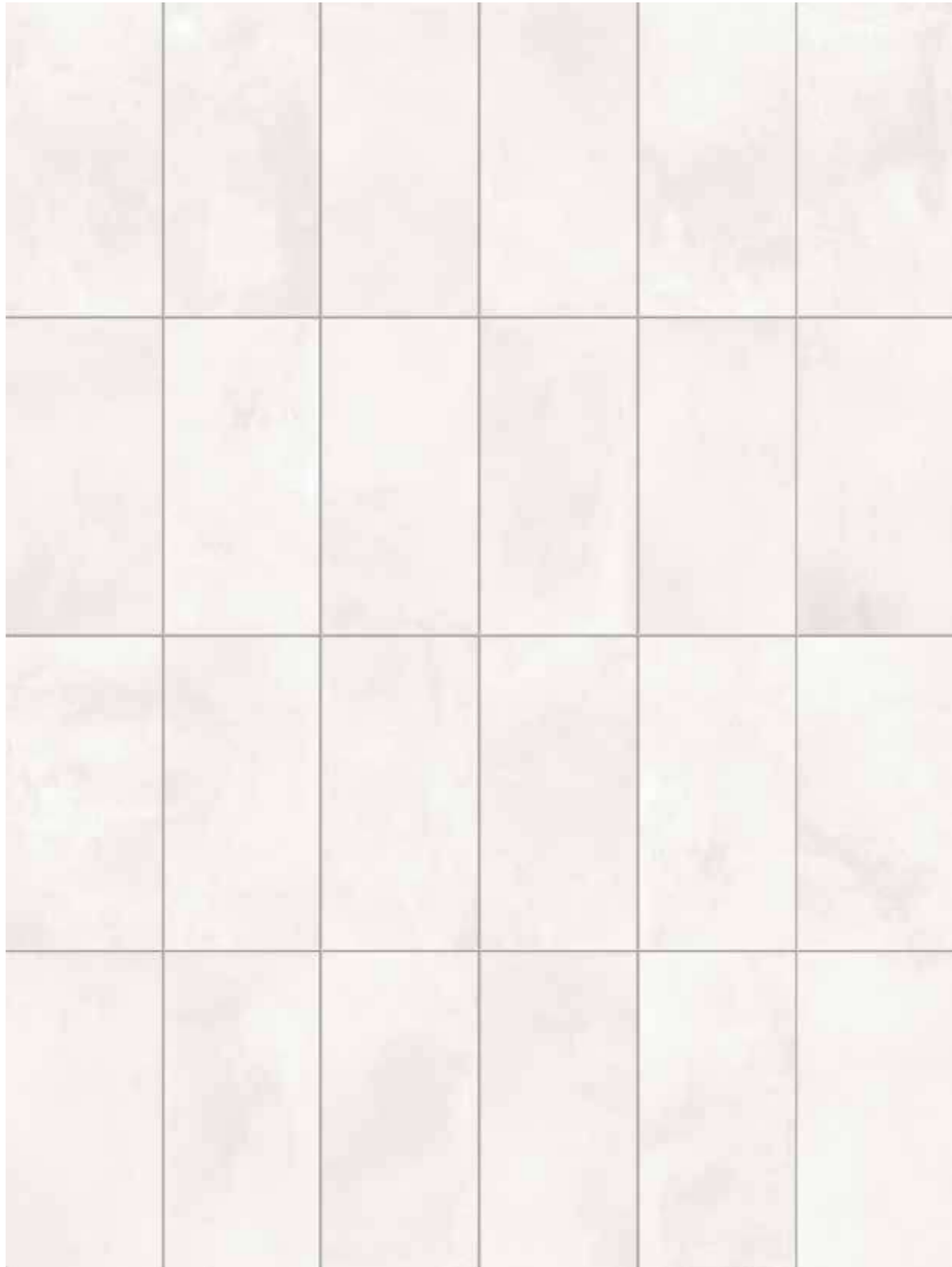


NORSE FOG 24"x48"



NORSE POWDER 24"x48"

NORSE | 12"x24" GRAPHIC DEVELOPMENT



NORSE FOG 12"x24"

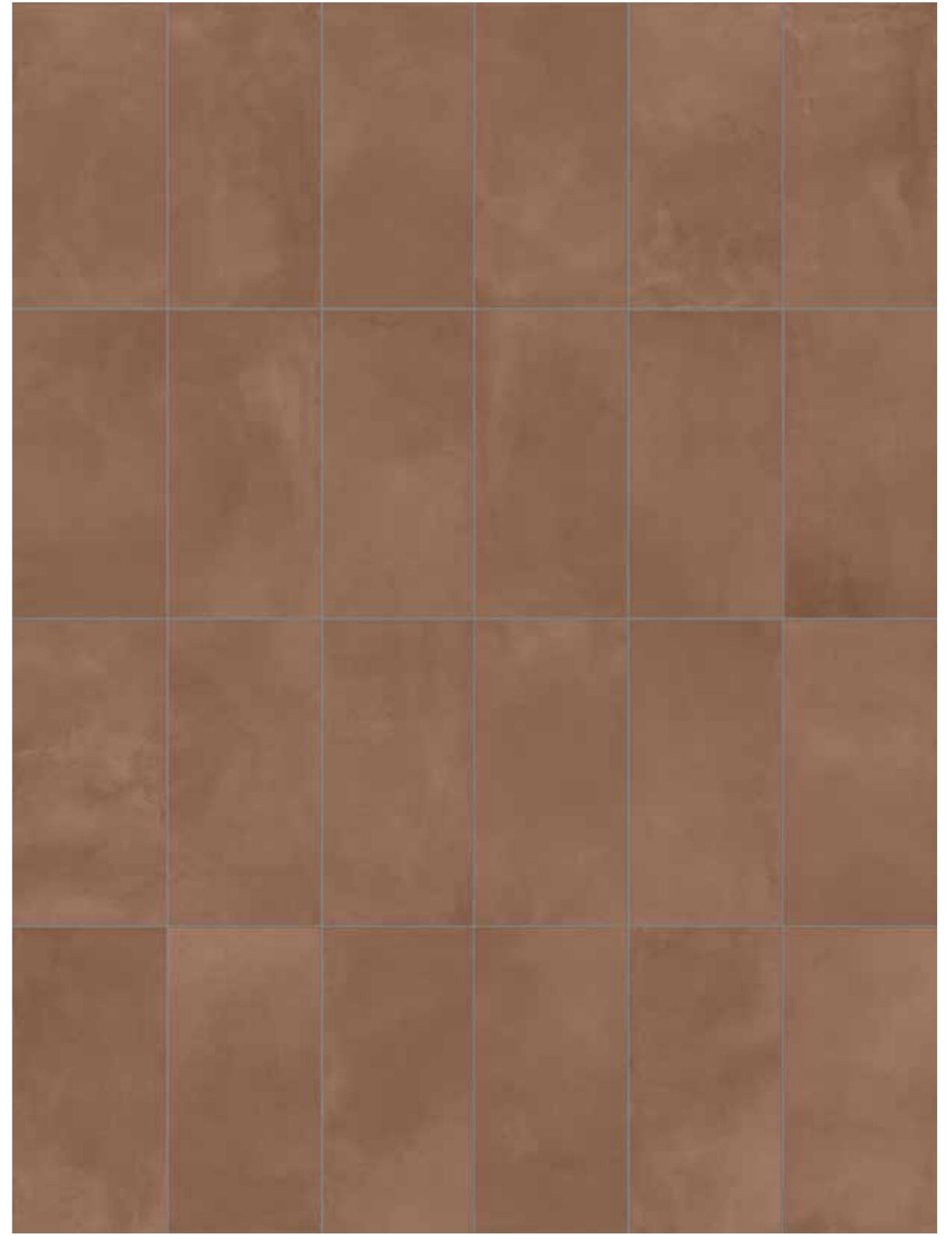


NORSE POWDER 12"x24"

NORSE | 12"x24" GRAPHIC DEVELOPMENT



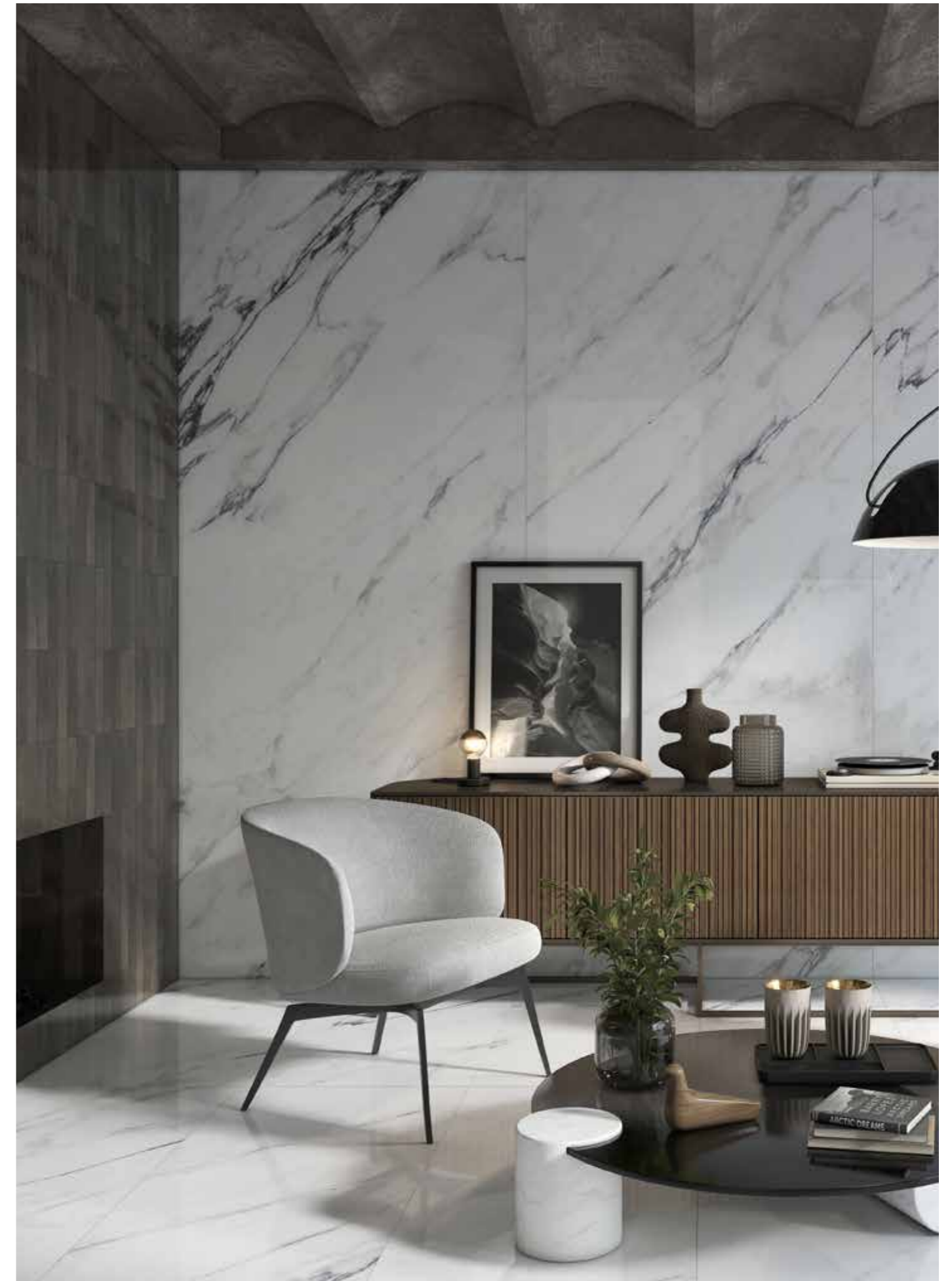
NORSE ASH 12"x24"



NORSE EARTH 12"x24"

MICROCOSMI

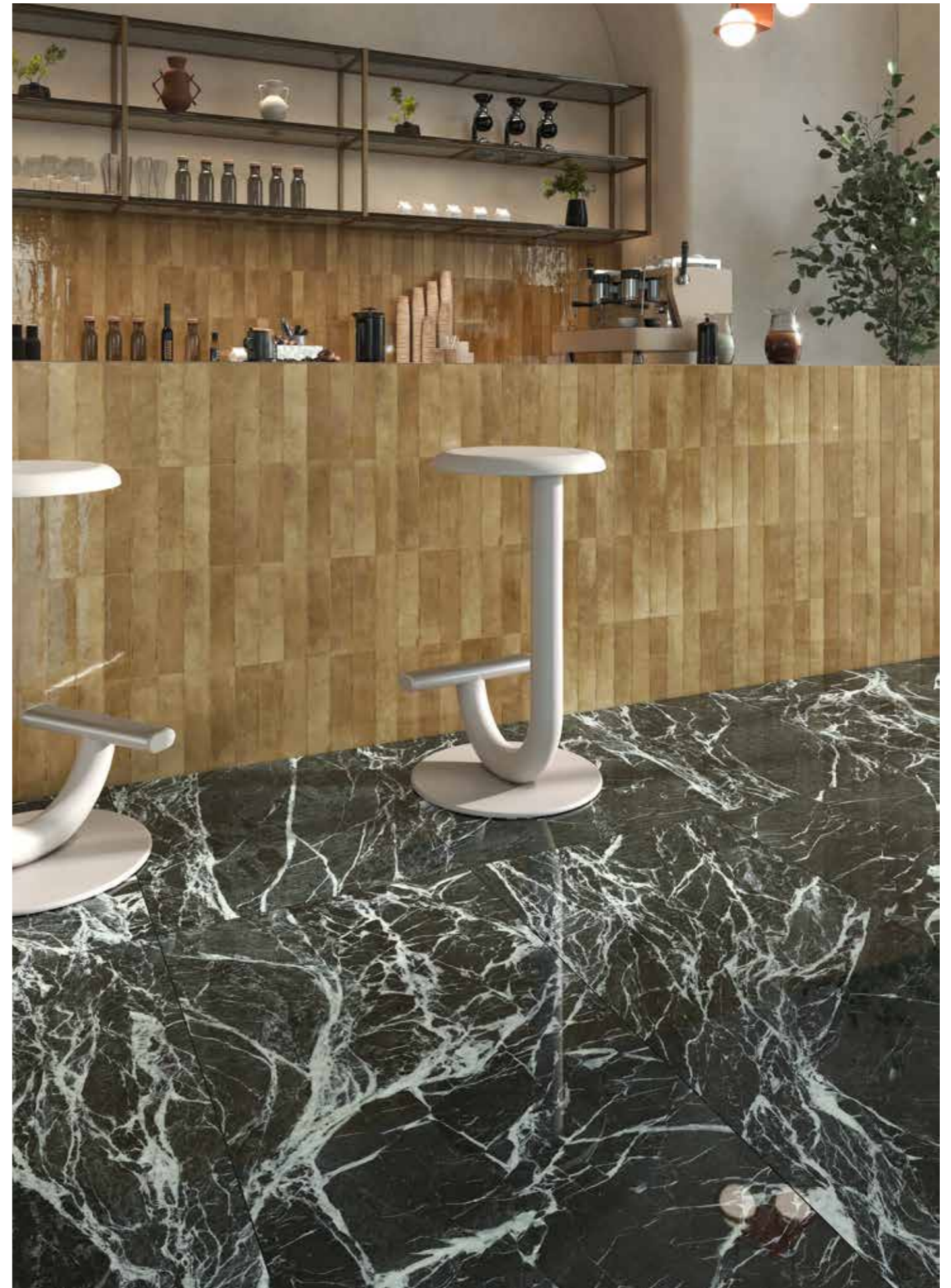
A refined selection inspired by rare and original marbles that reproduce on porcelain stoneware the aesthetic perfection of a material eternal in taste and elegance. Our selection consists of four varieties: Calacatta Macchia Antica, Calacatta Green, Irish Green and Verde Alpi in matt and polished finish.



MICROCOSMI CALACATTA MACCHIA ANTICA



MICROCOSMI CALACATTA GREEN



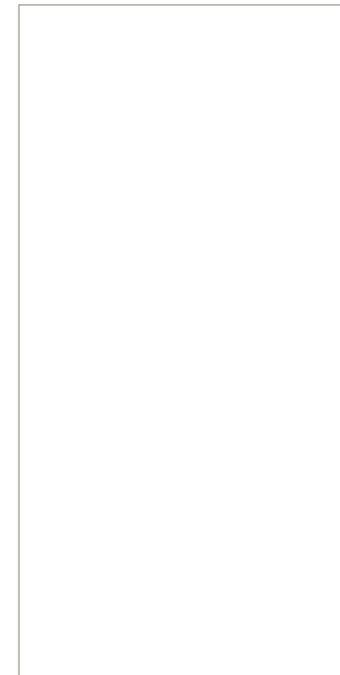
MICROCOSMI VERDE ALPI



MICROCOSMI IRISH GREEN

TECHNICAL FEATURES

collection	Microcosmi
material	porcelain stoneware
finish	matt, polished
nominal sizes	24"x48"
thickness	9 mm
colors	Calacatta Macchia Antica, Calacatta Green, Verde Alpi, Irish Green
category	UNI EN 14411 ISO 13006 App. G



24"x48"

COLORS



Calacatta Macchia Antica



Calacatta Green



Verde Alpi



Irish Green

MICROCOSMI | 24"x48" GRAPHIC DEVELOPMENT

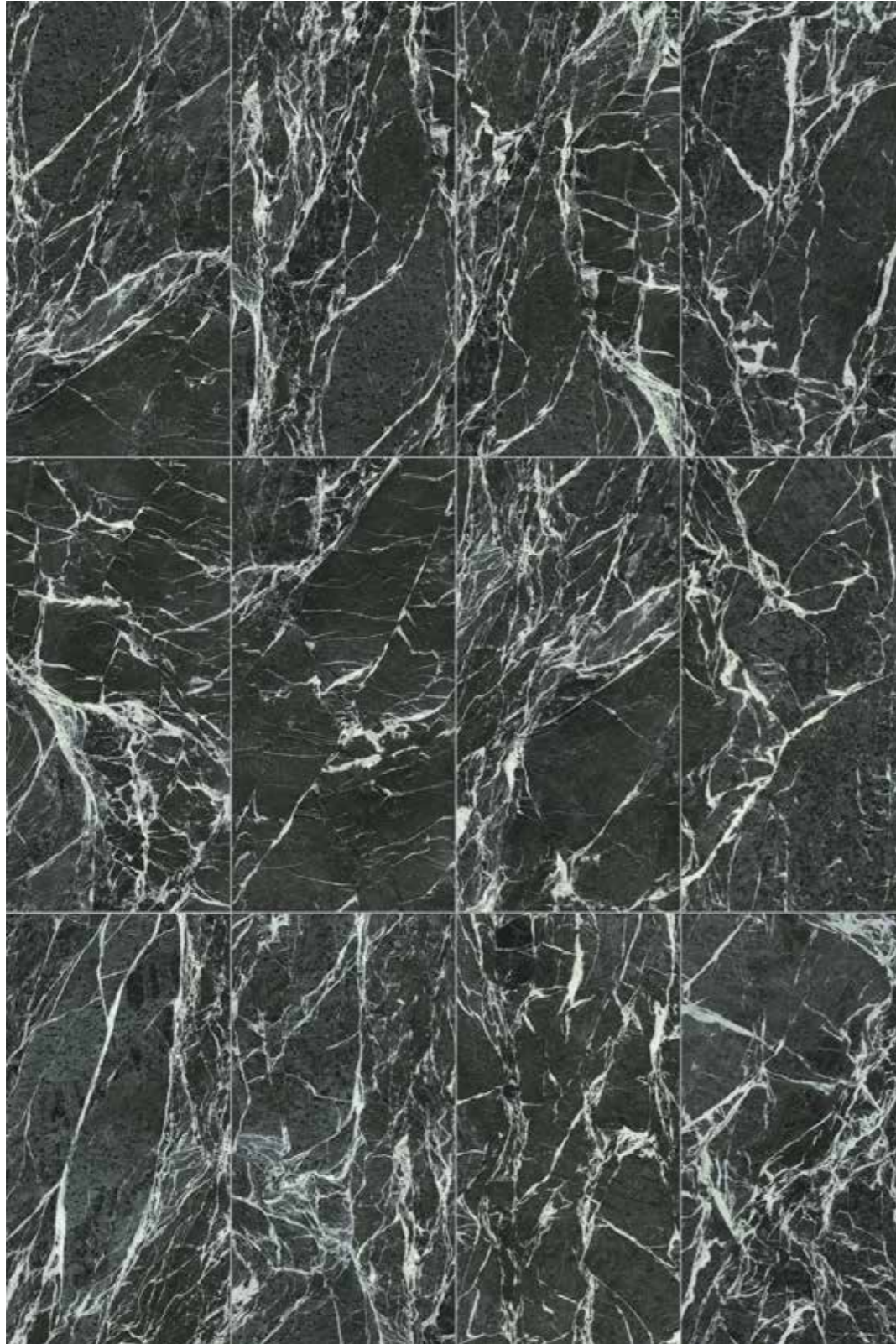


MICROCOSMI CALACATTA MACCHIA ANTICA 24"x48"



MICROCOSMI CALACATTA GREEN 24"x48"

MICROCOSMI | 24"x48" GRAPHIC DEVELOPMENT



MICROCOSMI VERDE ALPI 24"x48"



MICROCOSMI IRISH GREEN 24"x48"

use	floors, walls indoor
recommended adhesive	adhesive for porcelain stoneware
recommended joints	0,08" / 2mm joints
recommended fillers	cement-based grout epoxy grout carefully remove all traces of grout before it dries completely
cleaning tips after installation	<p>CEMENT-BASED GROUT: use a buffered acid (e.g. DETERDEK PRO by FILA or similar). Wet the floor with water, dilute the product 1:5 with water and pour it on the floor. Wait for 2-3 minutes, then use a white scotch brite pad and rinse well with clean water.</p> <p>EPOXY GROUT: use an alkaline detergent (e.g. FILA CR10 by FILA). FILA CR10: apply pure, wait for 30 minutes, then use a green scotch brite pad.</p> <p>SILICONE: use a solvent for silicone, e.g. FILA ZERO SIL. Put it straight onto the stain, wait for 20 minutes and remove the mark using scotch brite.</p> <p>PAINT: this can usually be removed using water, but if resin-based paints or particular enamels have been used, it is best to ask the manufacturer which solvent is most suitable.</p> <p>RUST: use a stain remover, e.g. FILA NO RUST. Apply the product onto the stain, leave for 15 minutes, remove the residue and rinse thoroughly.</p>

COLORS



Materici 01 Latte Materici 02 Argilla Materici 03 Cannella Materici 04 Cedro



Materici 05 Stagno Materici 06 Foresta Materici 07 Visone Materici 08 Pepe

Technical features glazed porcelain stoneware
Conforming to European Standards EN 14411 ISO 13006 App. G (GROUP BIa GL Eb ≤ 0,5%)

sizes EN ISO 10545-2	compliant	frost resistance EN ISO 10545-12	resistant
water absorption EN ISO 10545-3	compliant	chemicals resistance EN ISO 10545-13	from GLA to GLB from GHA to GHB GA
modulus of rupture EN ISO 10545-4	compliant	stains resistance EN ISO 10545-14	class 5
abrasion resistance EN ISO 10545-7	from 4 to 5	glaze crazing resistance EN ISO 10545-11	resistant
thermal expansion coefficient EN ISO 10545-8	≤9 MK-1	friction coefficient (slipperiness) ANSI A 137.1 (DCOF)	>0,42 matt
thermal shock resistance EN ISO 10545-9	resistant		

The information contained in this catalogue is correct to the best of our knowledge and update at the catalogue printing time; therefore the listed data is subject to change. The colors and shades shown here are only indicative.

use	walls indoor
recommended adhesive	adhesive for porcelain stoneware
recommended joints	0,08" / 2mm joints
recommended fillers	cement-based grout epoxy grout carefully remove all traces of grout before it dries completely
cleaning tips after installation	<p>CEMENT-BASED GROUT: use a buffered acid (e.g. DETERDEK PRO by FILA or similar). Wet the floor with water, dilute the product 1:5 with water and pour it on the floor. Wait for 2-3 minutes, then use a white scotch brite pad and rinse well with clean water.</p> <p>EPOXY GROUT: use an alkaline detergent (e.g. FILA CR10 by FILA). FILA CR10: apply pure, wait for 30 minutes, then use a green scotch brite pad.</p> <p>SILICONE: use a solvent for silicone, e.g. FILA ZERO SIL. Put it straight onto the stain, wait for 20 minutes and remove the mark using scotch brite.</p> <p>PAINT: this can usually be removed using water, but if resin-based paints or particular enamels have been used, it is best to ask the manufacturer which solvent is most suitable.</p> <p>RUST: use a stain remover, e.g. FILA NO RUST. Apply the product onto the stain, leave for 15 minutes, remove the residue and rinse thoroughly.</p>

COLORS



Blanc

Dune

Fog

Dea Glass

Garden

Water

Ocean

Cityscape

Technical features white-body wall tiles
Conforming to European Standards EN 14411 ISO 13006 App. L (GROUP BIII GL Eb > 10%)



water absorption
EN ISO 10545-3

compliant



chemicals resistance
EN ISO 10545-13
EN ISO 10545-14

conforming



modulus of rupture
EN ISO 10545-4

RM > 150 kg/cm²



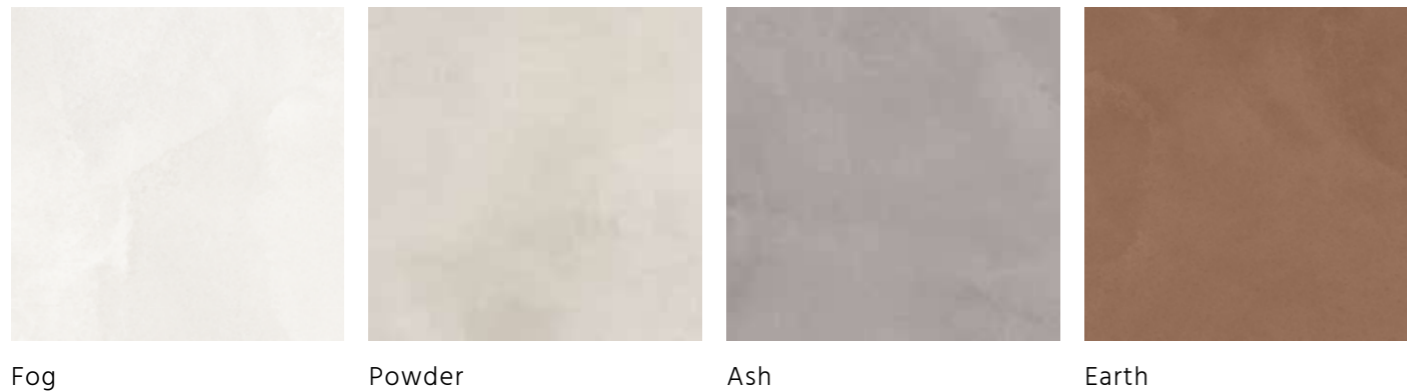
glaze crazing resistance
EN ISO 10545-11

resistant

The information contained in this catalogue is correct to the best of our knowledge and update at the catalogue printing time; therefore the listed data is subject to change. The colors and shades shown here are only indicative.

use	floors, walls indoor, outdoor
recommended adhesive	adhesive for porcelain stoneware
recommended joints	0,08" / 2mm joints
recommended fillers	cement-based grout epoxy grout carefully remove all traces of grout before it dries completely
cleaning tips after installation	<p>CEMENT-BASED GROUT: use a buffered acid (e.g. DETERDEK PRO by FILA or similar). Wet the floor with water, dilute the product 1:5 with water and pour it on the floor. Wait for 2-3 minutes, then use a white scotch brite pad and rinse well with clean water.</p> <p>EPOXY GROUT: use an alkaline detergent (e.g. FILA CR10 by FILA). FILA CR10: apply pure, wait for 30 minutes, then use a green scotch brite pad.</p> <p>SILICONE: use a solvent for silicone, e.g. FILA ZERO SIL. Put it straight onto the stain, wait for 20 minutes and remove the mark using scotch brite.</p> <p>PAINT: this can usually be removed using water, but if resin-based paints or particular enamels have been used, it is best to ask the manufacturer which solvent is most suitable.</p> <p>RUST: use a stain remover, e.g. FILA NO RUST. Apply the product onto the stain, leave for 15 minutes, remove the residue and rinse thoroughly.</p>

COLORS



Fog

Powder

Ash

Earth

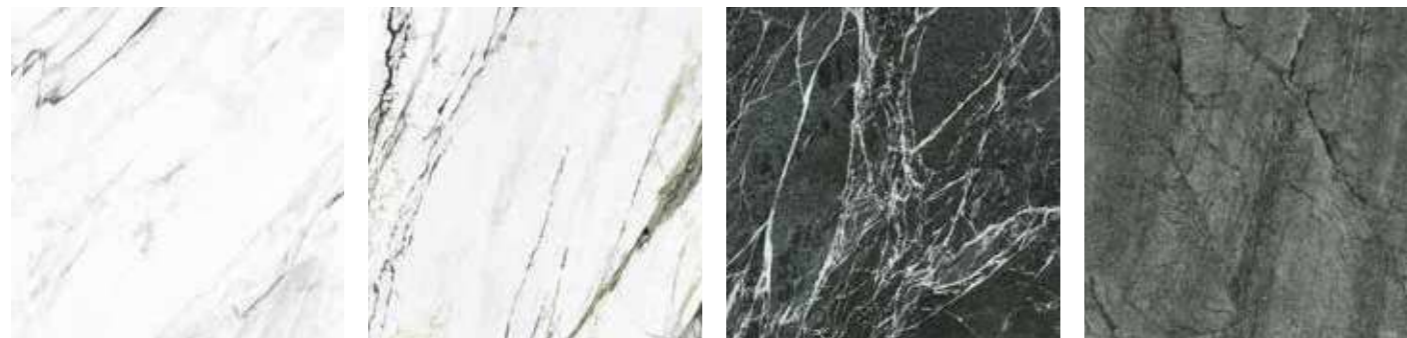
Technical features unglazed porcelain stoneware
Conforming to European Standards EN 14411 ISO 13006 App. G (GROUP BIa UGL Eb ≤ 0,5%)

sizes EN ISO 10545-2	compliant	frost resistance EN ISO 10545-12	resistant
water absorption EN ISO 10545-3	compliant	chemicals resistance EN ISO 10545-13	from ULA to ULB from UHA to UHB UA
breaking strength EN ISO 10545-4	compliant	stains resistance EN ISO 10545-14	class 5
abrasion resistance EN ISO 10545-6	average < 150mm ³	colors resistance to light DIN 51094	no alteration after testing
thermal expansion coefficient EN ISO 10545-8	≈9 MK-1	friction coefficient (slipperiness) DIN 51130 ANSI A 137.1 (DCOF)	R11 matt >0,42 matt
thermal shock resistance EN ISO 10545-9	resistant		

The information contained in this catalogue is correct to the best of our knowledge and update at the catalogue printing time; therefore the listed data is subject to change. The colors and shades shown here are only indicative.

use	floors, walls indoor
recommended adhesive	adhesive for porcelain stoneware
recommended joints	0,08" / 2mm joints
recommended fillers	cement-based grout epoxy grout carefully remove all traces of grout before it dries completely
cleaning tips after installation	<p>CEMENT-BASED GROUT: use a buffered acid (e.g. DETERDEK PRO by FILA or similar). Wet the floor with water, dilute the product 1:5 with water and pour it on the floor. Wait for 2-3 minutes, then use a white scotch brite pad and rinse well with clean water.</p> <p>EPOXY GROUT: use an alkaline detergent (e.g. FILA CR10 by FILA). FILA CR10: apply pure, wait for 30 minutes, then use a green scotch brite pad.</p> <p>SILICONE: use a solvent for silicone, e.g. FILA ZERO SIL. Put it straight onto the stain, wait for 20 minutes and remove the mark using scotch brite.</p> <p>PAINT: this can usually be removed using water, but if resin-based paints or particular enamels have been used, it is best to ask the manufacturer which solvent is most suitable.</p> <p>RUST: use a stain remover, e.g. FILA NO RUST. Apply the product onto the stain, leave for 15 minutes, remove the residue and rinse thoroughly.</p>

COLORS







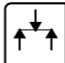







Calacatta Macchia Antica

Calacatta Green

Verde Alpi

Irish Green

Technical features unglazed and glazed porcelain stoneware
Conforming to European Standards EN 14411 ISO 13006 App. G (GROUP BIa UGL Eb ≤ 0,5%)

 sizes EN ISO 10545-2	compliant	 frost resistance EN ISO 10545-12	resistant
 water absorption EN ISO 10545-3	compliant	 stains resistance EN ISO 10545-14	class 5
 modulus of rupture EN ISO 10545-4	compliant	 *colors resistance to light DIN 51094	no alteration after testing
 abrasion resistance EN ISO 10545-6 EN ISO 10545-7	average < 150mm ³ from 4 to 5	 glaze crazing resistance EN ISO 10545-11	resistant
 thermal expansion coefficient EN ISO 10545-8	≤9 MK-1	 friction coefficient (slipperiness) DIN 51130 ANSI A 137.1 (DCOF)	R9 matt >0,42 matt
 thermal shock resistance EN ISO 10545-9	resistant	 chemicals resistance EN ISO 10545-13	from ULA to ULB from UHA to UHB UA from GLA to GLB from GHA to GHB GA

* Valid only for polished finish.

The information contained in this catalogue is correct to the best of our knowledge and update at the catalogue printing time; therefore the listed data is subject to change. The colors and shades shown here are only indicative.

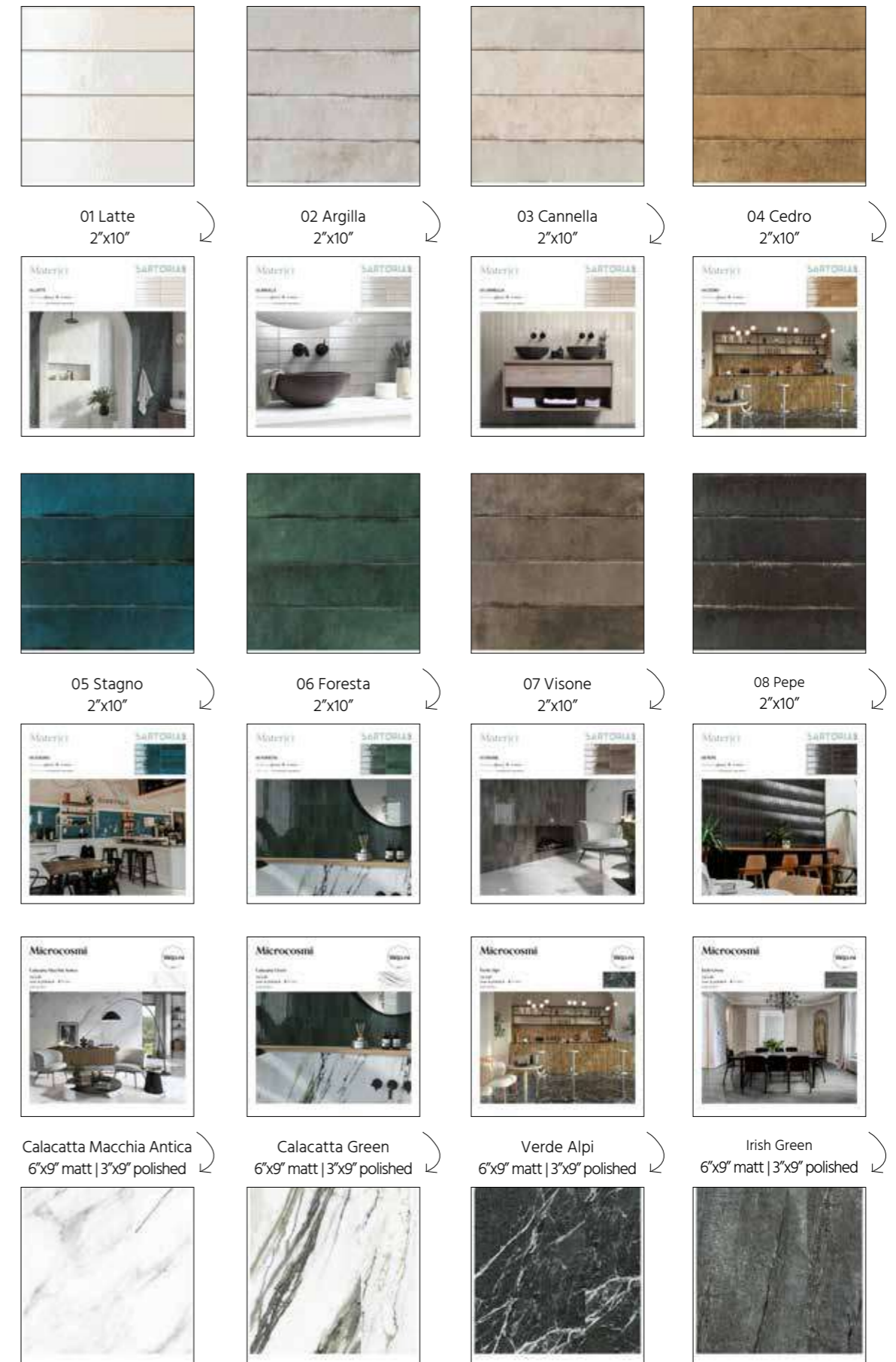
MERCHANDISING

MATERICI | MICROCOSMI TABLE DISPLAY

display size	overall space needed for full display: W25xD36xH4
crate size	W50xD47xH25
description	display consisting of a base with 12 slots containing 12 panels, one for each collection's color, size 9 1/2"x10", with printed image and info on the back and laid material on the front.



MATERICI | MICROCOSMI TABLE DISPLAY CONTENTS

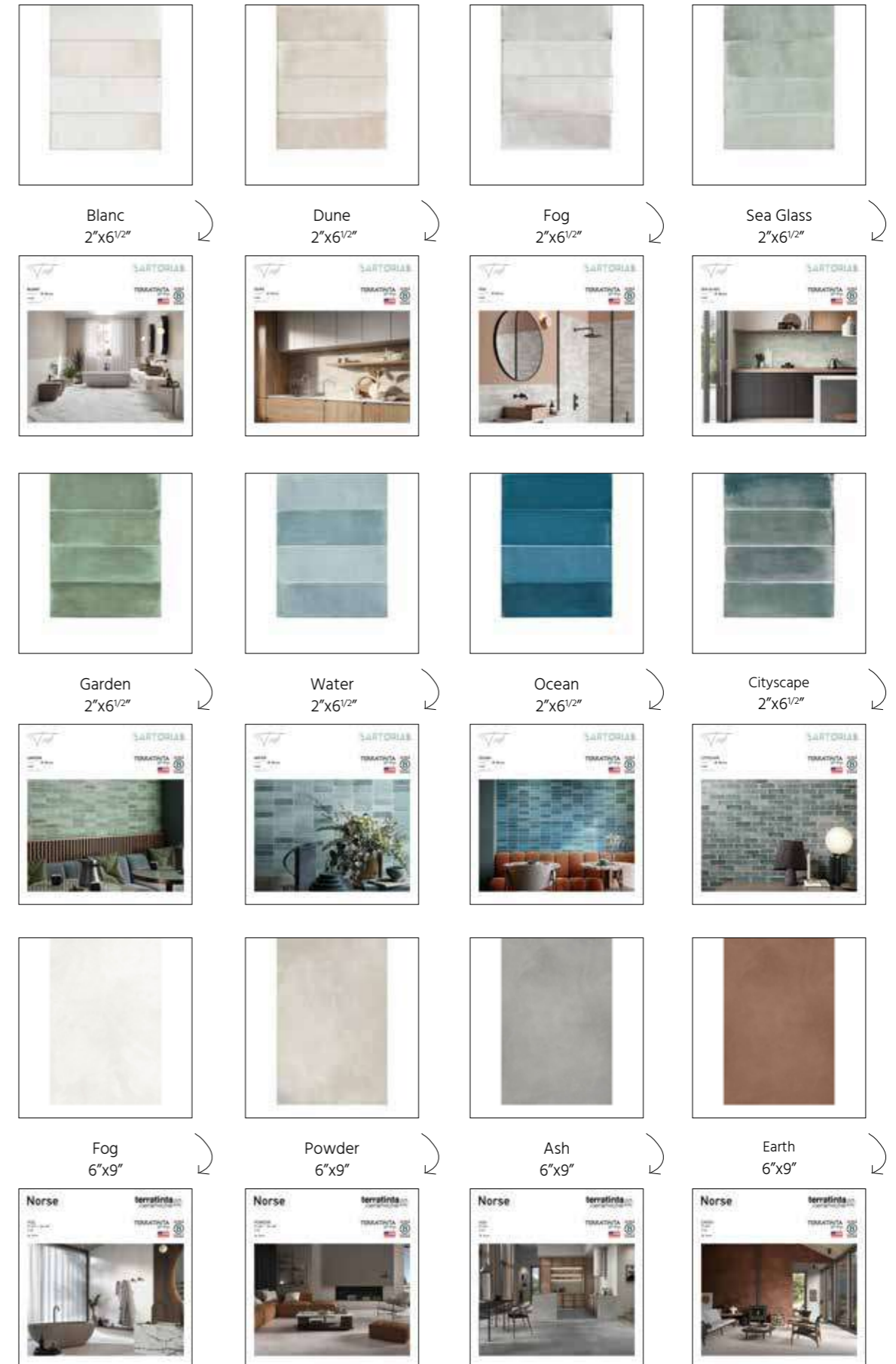


TINT | NORSE TABLE DISPLAY

display size	overall space needed for full display: W25xD36xH4
crate size	W50xD47xH25
description	display consisting of a base with 12 slots containing 12 panels, one for each collection's color, size 9 1/2"x10", with printed image and info on the back and laid material on the front.



TINT | NORSE TABLE DISPLAY CONTENTS



TERRATINTA
group



DOWNLOAD
AREA

TERRATINTA
group

Terratinta Group Srl SB

Via Viazza Il Tronco 45
41042 Fiorano Modenese (MO) - Italy
T. +39 0536 911408

Terratinta Group Terratinta Group

Project by Terratinta Group Srl SB
April 2023

Code: CATUSA2023



10 NEW MAPLE AVE. SUITE 307
PINE BROOK, NJ 07058

www.thestoneproject.net