

# PANBETON®

## TECHNICAL DATA SHEET

Panbeton® is a unique technology of ultra-lightweight concrete cladding. These slabs are quick and easy to install. It is the ideal covering to dress up a space with concrete. A large lightweight and easy to cut slab.

- 
- Front made of genuine raw concrete
  - A simple attachment system
  - Quick installation with little handling
  - Endless customisation possibilities

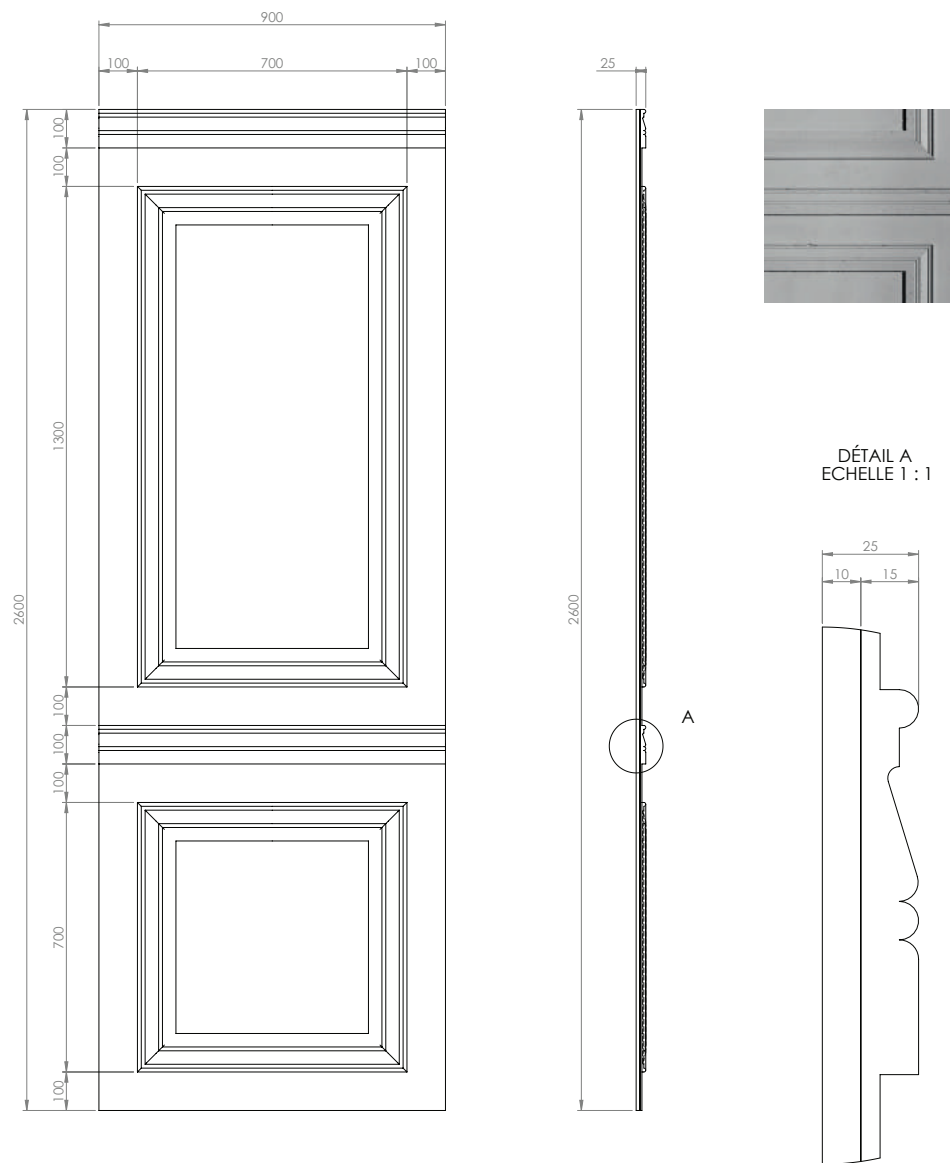


**MADE IN HAUSSMANN**  
MATALI CRASSET

**Available dimension :**  
**102.36" x 35.43" x 0.98"**

# PANBETON® MADE IN HAUSSMANN

Ce dessin est la propriété de la société LCDA. Toute reproduction sans notre accord préalable est interdite.



## TECHNICAL INFORMATION:

- Material: Ultra-high performance fiber reinforced concrete
- Concrete weight: 92.6 lbs
- General tolerance: +/- 0.12"



Dimensions according to model  
102.36" x 35.43"



Orthogonality  
+/- 1.0 %



Thickness according to model  
0.98"



Weight  
92,6 Lbs



Surface area  
+/- 1.0 %



Mounting  
Bonding



Fire resistance  
Euroclass B-s1, d0 //  
ASTM E84 : Class A /  
Smoke index : 0 / Flame  
spread index : 0



Freezing and thawing  
Stable



Thermal shock  
Resistant



Light resistance  
No impact

# PANBETON® COLOR CHART

## COLORS



**402** - White



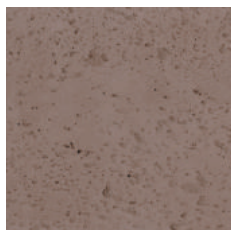
**404** - Stone



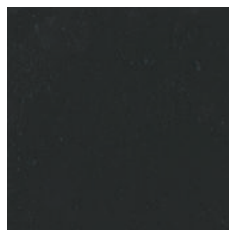
**216** - Anthracite grey



**200** - Natural grey



**205** - Brown

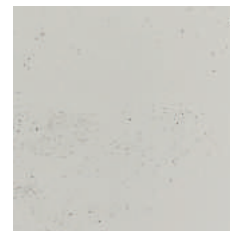


**209** - Black

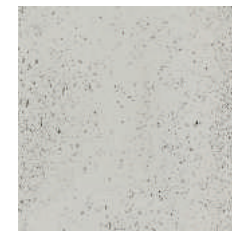


**217** - Slate grey

## FINISHES



Light pitted



Medium pitted



Heavy pitted

# PANBETON® TECHNICAL DATA

<b>DIMENSIONS</b>	102.36" x 35.43"
<b>THICKNESS</b>	0.98"
<b>TOTAL WEIGHT</b>	92.6 lbs
<b>WEIGHT PER M<sup>2</sup></b>	From 11 to 14 kg/m <sup>2</sup>
<b>FIRE CLASSIFICATION</b>	Euroclass B-s1, d0 // ASTM E84 : Class A / Smoke index : 0 / Flame spread index : 0
<b>VOC CLASSIFICATION</b>	A+
<b>EXCLUDED</b>	Exterior and shower stall
<b>COMPOSITION</b>	Fibre-reinforced concrete (0.2") & construction panel (0,4")
<b>PROTECTIVE SEALER</b>	As an option (water-borne acrylic base)
<b>FIXING</b>	Gluing – Gluing + Screwing for ceilings
<b>SUBSTRATES</b>	Is glued to all substrates (Plasterboard, bricks, breeze-blocks, etc.)
<b>GLUE</b>	Hybrifix 550 DEN BRAVEN
<b>CUTTING</b>	Diamond blade, mitre, drilling, hole saw and others possible

# PANBETON® SPECIFICATIONS DETAILS

**PRODUCT NAME:** Panbeton® Made in  
Haussmann

**COMPANY NAME:** Concrete LCDA

**TECHNICAL DATA MORTAR:**

- Fibre-Reinforced shrinkage-compensating  
repair mortal

Non-shrinking mortal composed of sand,  
special cement, fibres and admixtures.

Compressive strength: Class R2

Chloride ion content:  $\leq 0.05\%$

Bonding:  $\geq 0.8$  MPa

Reaction to fire: Euroclass B-s1, d0 // ASTM E84 :  
Class A / Smoke index : 0 / Flame spread index : 0

**TECHNICAL DATA REINFORCED FIBER:**

- High Zirconia 17%+ Alkali Resistant Glass  
Fibre

**TECHNICAL DATA CONSTRUCTION**

**PANEL:**

Rigid extruded polystyrene foam finished on  
both sides with a polymer-modified mortar  
facing, reinforced with a glassfibre mesh fabric.

**FIBRE-REINFORCED  
CONCRETE (0,2'')**

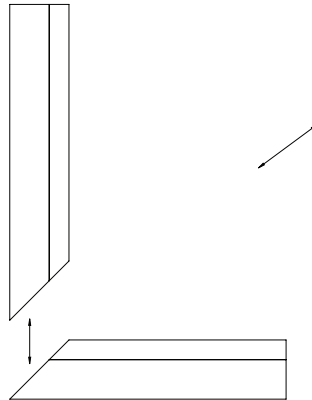
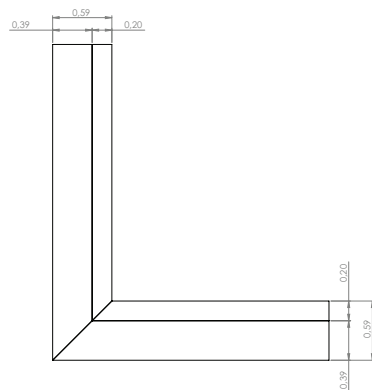
**CONSTRUCTION  
PANEL (0,4'')**



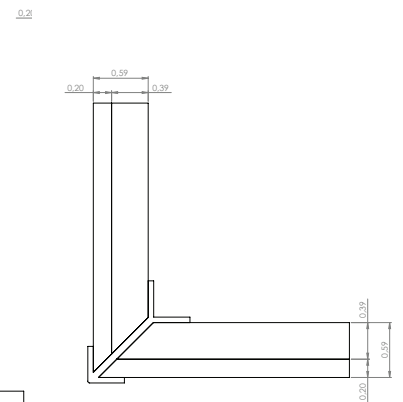
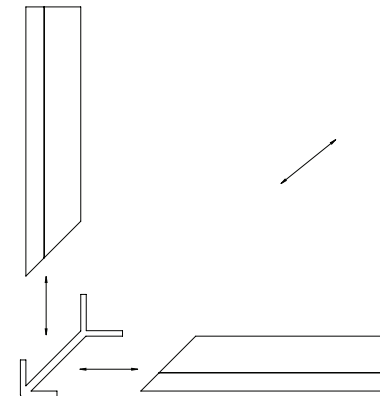
**USE THIS ENTIRE DESCRIPTION TO  
SPECIFY OUR PRODUCTS.**

# PANBETON® CORNER CUTTING

## OUTER CORNER

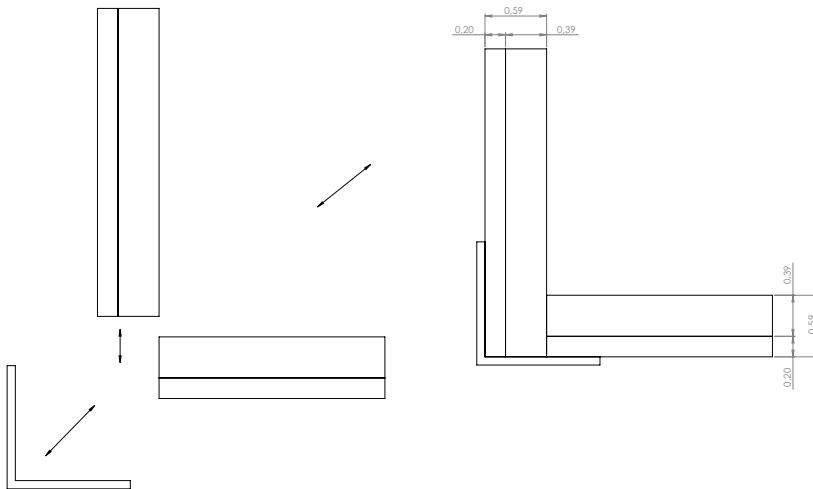


## IRON CORNER

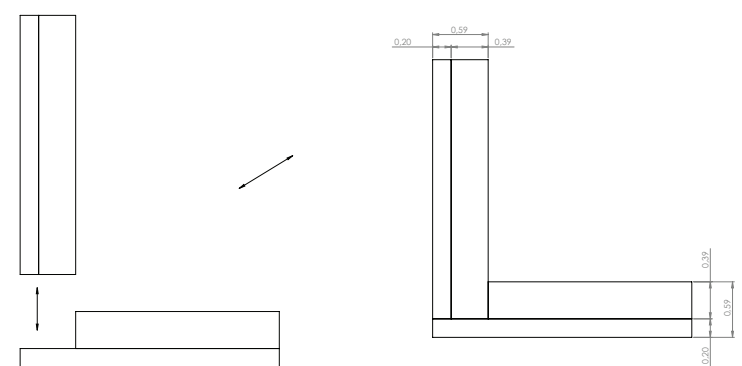
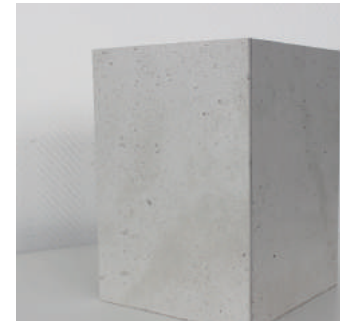


# PANBETON® CORNER CUTTING

## TOP CORNER IRON

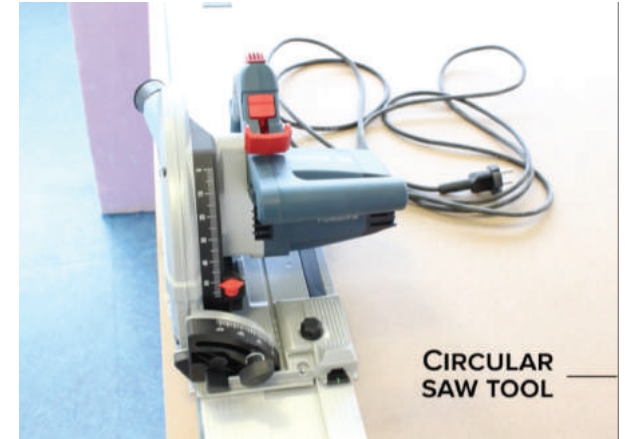


## BOARD TO BOARD JOIN





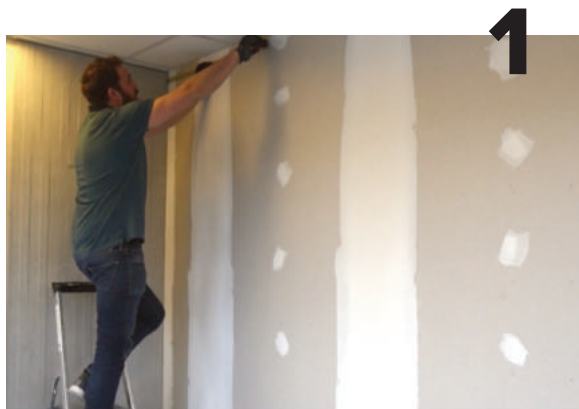
# PANBETON® INSTALLATION TOOLS



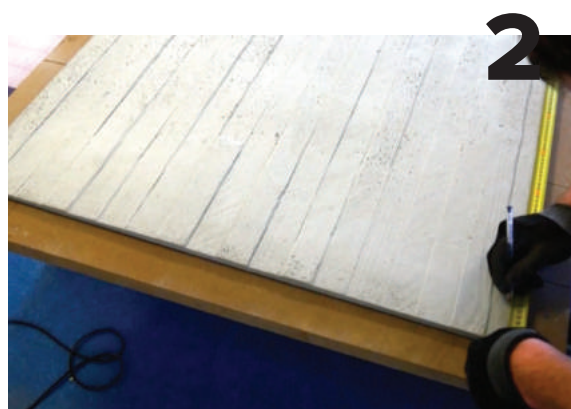
HYBRIFIX-550  
DEN BRAVEN SEALANTS



# PANBETON® INSTALLATION STEPS



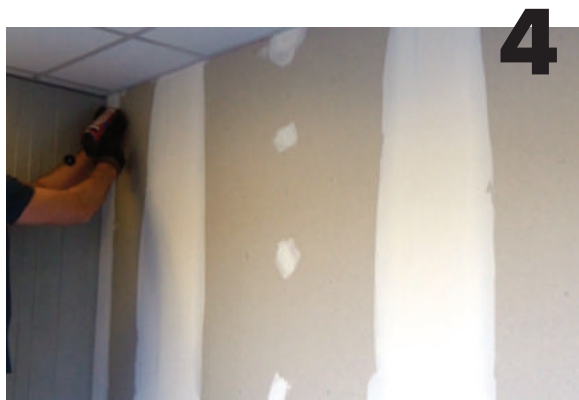
— TAKE WALL MEASUREMENTS BEFORE CUTTING THE PANEL



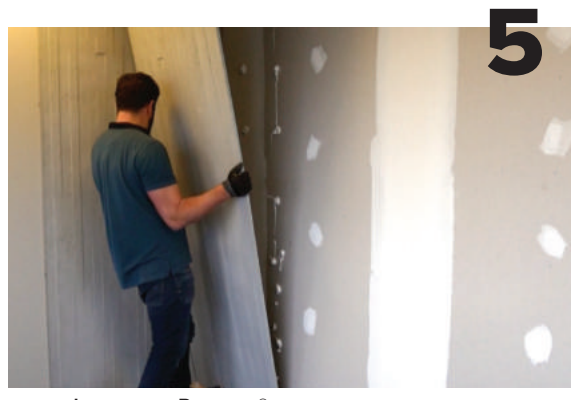
— COPY YOUR MEASUREMENTS ON THE PANBETON®



— START CUTTING WITH A PLUNGE-CUT SAW



— APPLY GLUE ON THE WALL



— INSTALL THE PANBETON® BY STARTING FROM BOTTOM TO TOP



***DO NOT FORGET TO DUST PANELS AFTER FINAL INSTALLATION***

CHECK THE ENTIRE VIDEO HERE: [HTTPS://WWW.YOUTUBE.COM/WATCH?V=U-IZ5ocQW-w](https://www.youtube.com/watch?v=U-IZ5ocQW-w)



CONCRETE LCD A

## CONTACT

CONTACT@CONCRETE-BETON.COM  
WWW.CONCRETE-BETON.COM