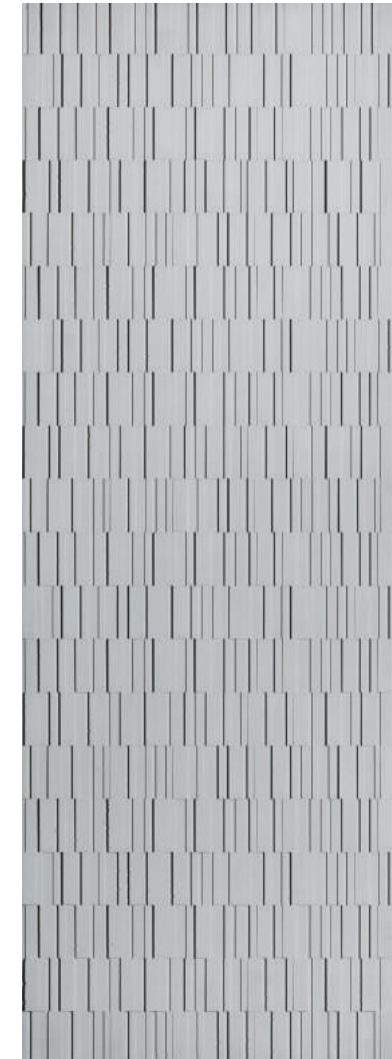


PANBETON®

TECHNICAL DATA SHEET

Panbeton® is a unique technology of ultra-lightweight concrete cladding. These slabs are quick and easy to install. It is the ideal covering to dress up a space with concrete. A large lightweight and easy to cut slab.

- Front made of genuine raw concrete
- A simple attachment system
- Quick installation with little handling
- Endless customisation possibilities

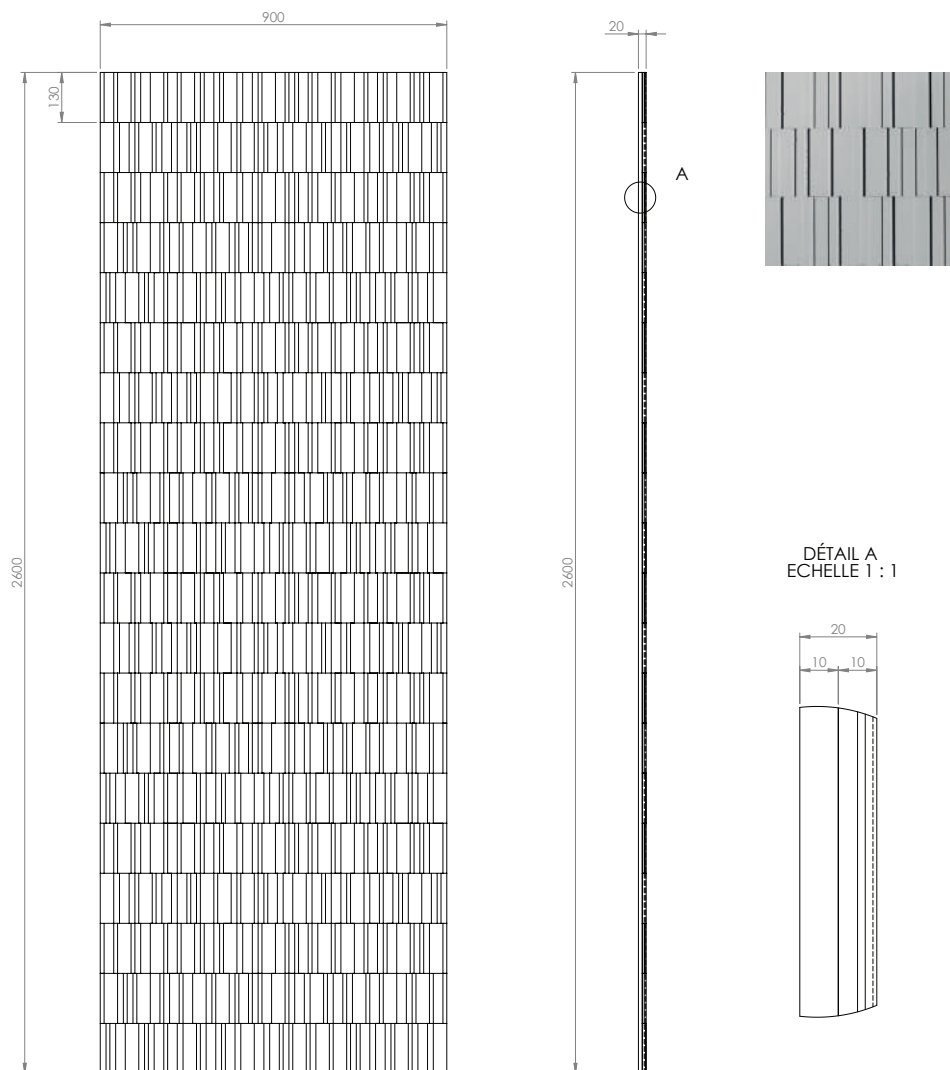


HARMONY
PATRICK NORGUET

Available dimension :
102.36" x 35.43" x 0.78"

PANBETON® HARMONY

Ce dessin est la propriété de la société LCDA. Toute reproduction sans notre accord préalable est interdite.



TECHNICAL INFORMATION:

- Material: Ultra-high performance fiber reinforced concrete
- Concrete weight: 97 lbs
- General tolerance: +/- 0.12"



Dimensions *according to model*
102.36" x 35.43"



Orthogonality
+/- 1.0 %



Thickness *according to model*
0.59" to 0.78"



Weight
97 Lbs



Surface area
+/- 1.0 %



Mounting
Bonding



Fire resistance
Euroclass B-s1, d0 //
ASTM E84 : Class A /
Smoke index : 0 / Flame
spread index : 0



Freezing and thawing
Stable



Thermal shock
Resistant



Light resistance
No impact

PANBETON® COLOR CHART

COLORS



402 - White



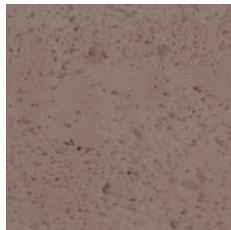
404 - Stone



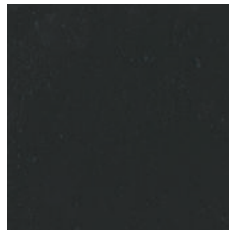
216 - Anthracite grey



200 - Natural grey



205 - Brown



209 - Black



217 - Slate grey

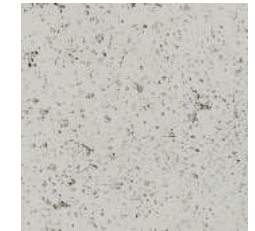
FINISHES



Light pitted



Medium pitted



Heavy pitted

PANBETON® TECHNICAL DATA

DIMENSIONS	102.36" x 35.43"
THICKNESS	0.59" to 0.78"
TOTAL WEIGHT	97 lbs
WEIGHT PER M²	From 11 to 14 kg/m ²
FIRE CLASSIFICATION	Euroclass B-s1, d0 // ASTM E84 : Class A / Smoke index : 0 / Flame spread index : 0
VOC CLASSIFICATION	A+
EXCLUDED	Exterior and shower stall
COMPOSITION	Fibre-reinforced concrete (0.2") & construction panel (0,4")
PROTECTIVE SEALER	As an option (water-borne acrylic base)
FIXING	Gluing – Gluing + Screwing for ceilings
SUBSTRATES	Is glued to all substrates (Plasterboard, bricks, breeze-blocks, etc.)
GLUE	Hybrifix 550 DEN BRAVEN
CUTTING	Diamond blade, mitre, drilling, hole saw and others possible

PANBETON® SPECIFICATIONS DETAILS

PRODUCT NAME: Panbeton® Harmony

COMPANY NAME: Concrete LCDA

TECHNICAL DATA MORTAR:

- Fibre-Reinforced shrinkage-compensating repair mortal

Non-shrinking mortal composed of sand, special cement, fibres and admixtures.

Compressive strength: Class R2

Chloride ion content: $\leq 0.05\%$

Bonding: ≥ 0.8 MPa

Reaction to fire: Euroclass B-s1, d0 // ASTM E84 :
Class A / Smoke index : 0 / Flame spread index : 0

TECHNICAL DATA REINFORCED FIBER:

- High Zirconia 17%+ Alkali Resistant Glass Fibre

TECHNICAL DATA CONSTRUCTION

PANEL:

Rigid extruded polystyrene foam finished on both sides with a polymer-modified mortar facing, reinforced with a glassfibre mesh fabric.



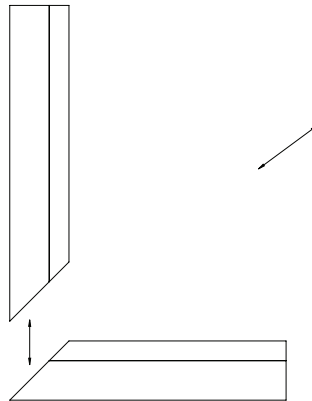
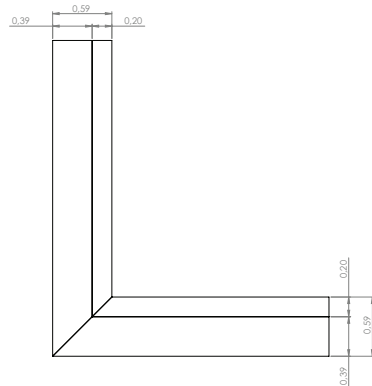
**CONSTRUCTION
PANEL (0,4'')**

**FIBRE-REINFORCED
CONCRETE (0,2'')**

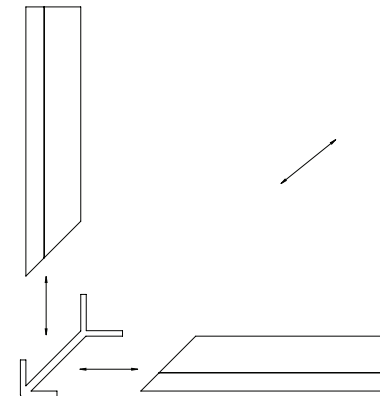
**USE THIS ENTIRE DESCRIPTION TO
SPECIFY OUR PRODUCTS.**

PANBETON® CORNER CUTTING

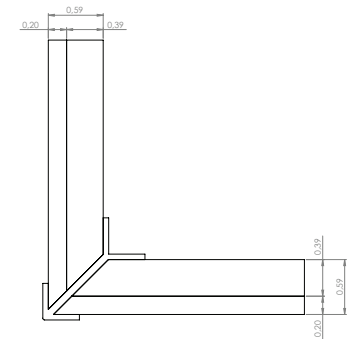
OUTER CORNER



IRON CORNER

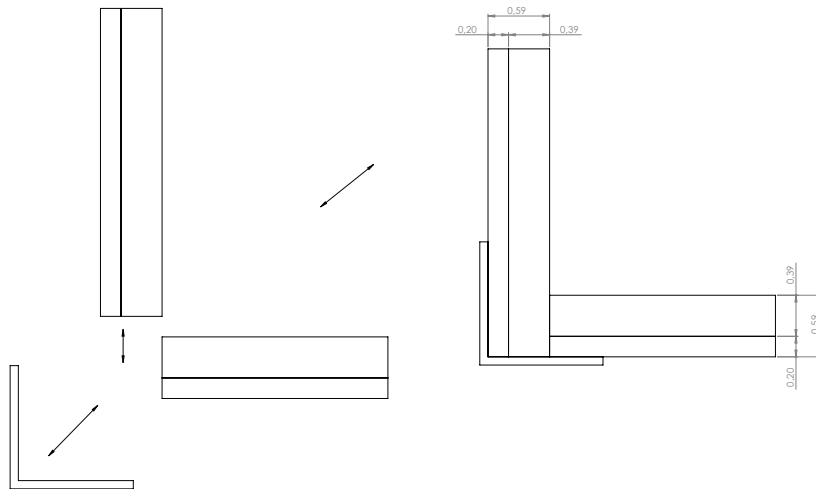


0.20

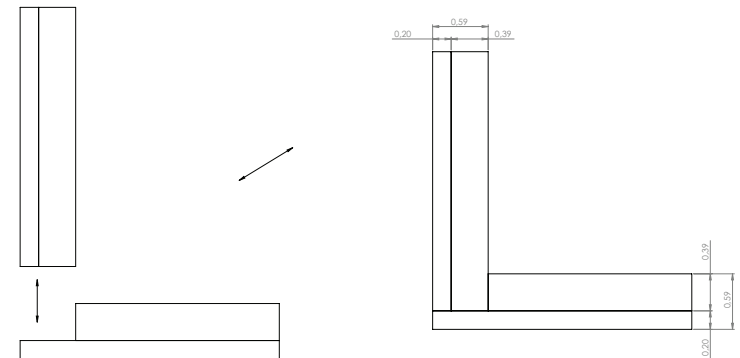
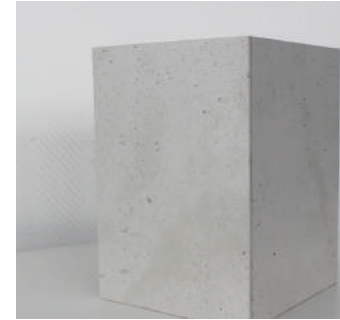


PANBETON® CORNER CUTTING

TOP CORNER IRON



BOARD TO BOARD JOIN



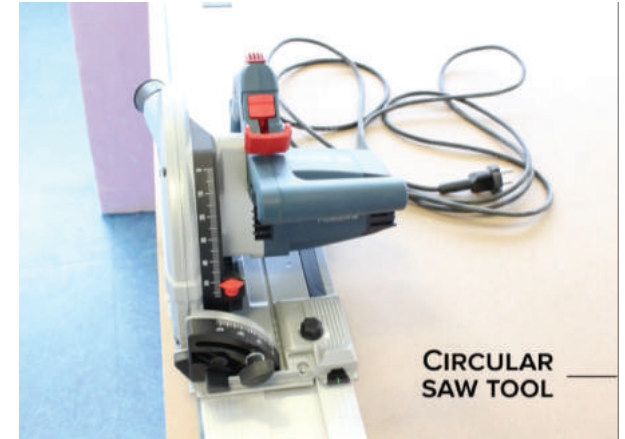
PANBETON® INSTALLATION TOOLS



MALLET & HAND BRUSH



LEVEL, GUIDE & CARPENTER RULE



CIRCULAR SAW TOOL



DIAMOND BLADE WITH A FINE GRIT
& REDUCER RING



SAFETY HEADPHONES
& PROTECTIVE GLOVES

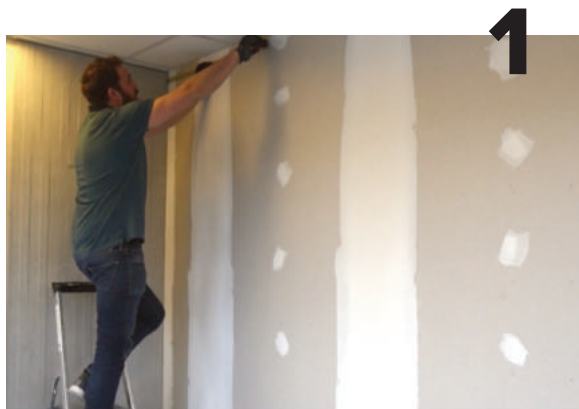


GLUE GUN
& GLUE CARTRIDGE
HYBRIFIX-550
DEN BRAVEN SEALANTS



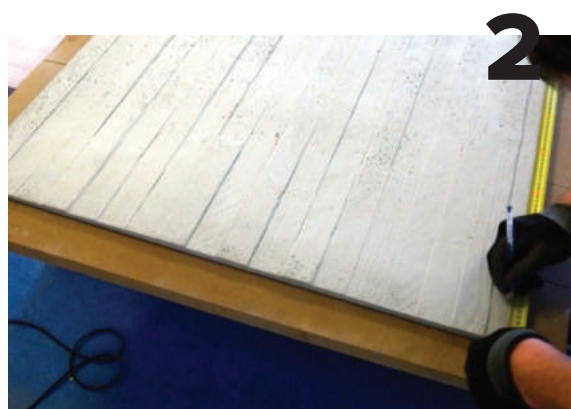
HYBRIFIX-550
DEN BRAVEN SEALANTS

PANBETON® INSTALLATION STEPS



1

TAKE WALL MEASUREMENTS BEFORE CUTTING THE PANEL



2

COPY YOUR MEASUREMENTS ON THE PANBETON®



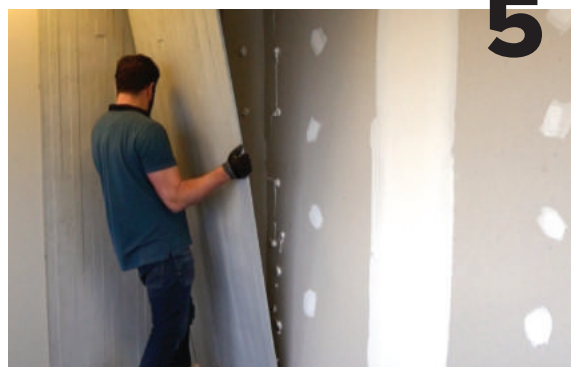
3

START CUTTING WITH A PLUNGE-CUT SAW



4

APPLY GLUE ON THE WALL



5

INSTALL THE PANBETON® BY STARTING FROM BOTTOM TO TOP



6

**DO NOT FORGET TO DUST PANELS
AFTER FINAL INSTALLATION**

CHECK THE ENTIRE VIDEO HERE: [HTTPS://WWW.YOUTUBE.COM/WATCH?V=U-IZ5ocQW-w](https://www.youtube.com/watch?v=U-IZ5ocQW-w)

CONCRETE LCDA

CONTACT

CONTACT@CONCRETE-BETON.COM
WWW.CONCRETE-BETON.COM